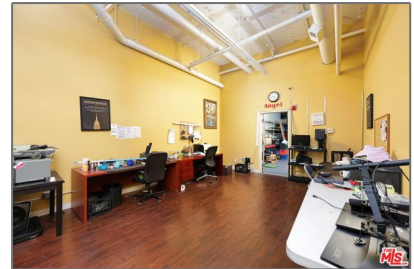
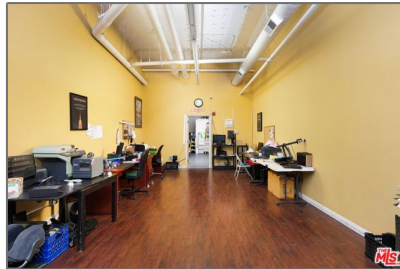


Commercial For Sale

996 Sqft - 1458 San Pedro Street, Los Angeles,
California, 90015



Basic Details

Status:	Active
Listing Type:	For Sale
Property Type:	Commercial
Property SubType:	Single Family Residence
Price:	\$250,000
Price Per Square Foot:	\$251
Square Footage:	996 Sqft
Year Built:	2007
View:	Mountain(s)
Bathrooms:	4
Country:	US
State:	California
County:	Los Angeles
City:	Los Angeles
Zipcode:	90015
Listing ID:	25547235

Features

Association:	1
Senior Community:	0
✓ Common Walls:	No Common Walls
Stories:	0
✓ Community Features:	Sidewalks, Street Lights, Curbs
✓ Amenities:	Other
AttachedGarage :	1
✓ Parking:	0.00
✓ Parking:	Driveway, Direct Garage Access, Driveway Level, Concrete
Spa:	0
✓ Lot Features:	Back Yard, Cul-de-sac, Landscaped, Yard, Lawn
✓ Flooring:	Carpet, Tile
✓ Window Features:	Plantation Shutters, Blinds
✓ Entry Location:	Off Street
✓ Property Condition:	Fixer

✓	Interior Features:	Pantry, Recessed Lighting, Ceiling Fan(s), Granite Counters
Main Level Bathrooms:	2	
Main Level Bedrooms:	1	
✓	Sewer:	Public Sewer
✓	Appliances:	Disposal, Microwave, Gas Cooktop

MLS [Addon](#)

Zoning:	LAM2
Parcel Number:	5132027172
Lot Size Square Feet:	23,436 Sqft
TaxAnnualAmount:	\$0
TaxYear:	0
✓ RoomKitchenFeatures:	Granite Counters, Kitchen Island, Kitchen Open To Family Room, Walk-in Pantry
✓ RoomBathroomFeatures:	Walk-in Shower, Jetted Tub, Vanity Area
High School:	Arlington
High School 2:	Arling
Middle Or Junior School:	Miller
High School District:	William S. Hart Union
Levels:	Two
✓ EatingArea:	Dining Room, Breakfast Counter / Bar, Breakfast Nook
Taxes:	\$0
Guest House SqFt:	0 Sqft

Approx Lot SqFt:

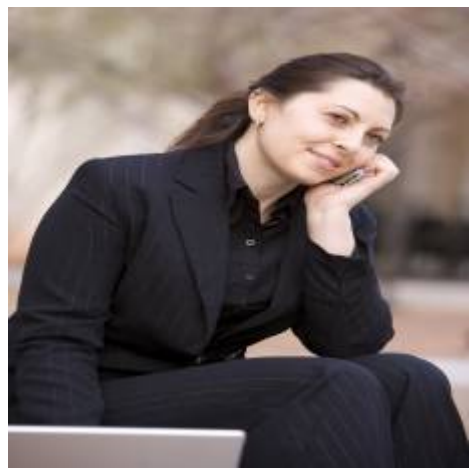
0 Sqft

✓

Special Listing
Conditions:

Notice Of Default

Agent [Info](#)



Rina Maya
☎ 858-876-7946
☎ 800-878-0907
✉ Questions@unitedbrokersinc.net

-
