

Residential For Sale

2,000 Sqft - 5770 SouthviewDrive, Yorba Linda,
California, 92887



Basic Details

Status:	Active
Listing Type:	For Sale
Property Type:	Residential
Property SubType:	Single Family Residence
Price:	\$1,374,999
Price Per Square Foot:	\$688
Square Footage:	2,000 Sqft
Lot Area:	0.24 Sqft
Year Built:	1996
View:	Mountain(s)
Bedrooms:	3
Bathrooms:	3
Bathrooms (Full):	2
Bathrooms (1/2):	1
Country:	US
State:	California
County:	Orange
City:	Yorba Linda
Zipcode:	92887

Features

✓ View:	Neighborhood, Hills, Trees/woods
Association:	1
Senior Community:	0
✓ Common Walls:	No Common Walls
Stories:	2
✓ Community Features:	Sidewalks, Street Lights, Park, Curbs, Horse Trails, Storm Drains, Fishing, Lake
✓ Pool:	Exercise pool, Filtered, In ground, Association, Lap
✓ Amenities:	Pool, Spa/hot Tub, Clubhouse, Meeting Room, Gym/ex Room
AttachedGarage :	1
✓ Parking:	6.00
✓ Parking:	Driveway, Garage, Parking Space
Spa:	1
✓ Fireplace:	Gas, Family room
✓ Lot Features:	Sprinkler System, Lot

Listing ID:	PW25121428	10000-19999 Sqft	
		✓ Fence:	Wrought iron, Block
		✓ Security:	Carbon monoxide detector(s), Smoke Detector(s)
		✓ Patio:	Patio Open, Concrete
		Entry Level: 1	
		✓ Laundry:	Individual Room, Inside, Washer Hookup, Gas & Electric Dryer Hookup
		✓ Room Type:	Family Room, Living Room, Loft, Separate Family Room, Kitchen, Laundry, All Bedrooms Up, Attic, Entry, Galley Kitchen, Foyer, Primary Suite, Primary Bathroom, Primary Bedroom
		✓ Roofing:	Tile
		✓ Flooring:	Vinyl
		✓ Window Features:	Double Pane Windows, Plantation Shutters, Shutters
		✓ Entry Location:	Main Level
		✓ Spa Construction:	In Ground, Association
		✓ Property Condition:	Turnkey
		✓ Foundation Details:	Slab
		✓ Exterior Features:	Lighting, Rain Gutters
		✓ Interior Features:	High Ceilings, Open Floorplan, Pantry, Recessed Lighting, Two Story Ceilings, Cathedral Ceiling(s), Ceiling Fan(s), Granite Counters, Block Walls
		Main Level 1	
		Bathrooms:	
		✓ Heating System:	Central
		✓ Cooling System:	Central Air

✓	Utilities:	Sewer Connected, Water Connected, Electricity Connected, Natural Gas Connected, Underground Utilities, Cable Connected
✓	Water Source:	Public
✓	Sewer:	Public Sewer, Sewer Paid
✓	Appliances:	Dishwasher, Disposal, Double Oven, Microwave, Refrigerator, Gas Cooktop, Free-standing Range
✓	Accessibility Features:	2+ Access Exits

MLS Addon

Association Fee Frequency: **Monthly**

Parcel Number: **34994127**

Lot Size Square Feet: **10,350**

✓	Exclusions:	Clicking The First 360 Icon Will Take You To A Property Property Page With A Photo Gallery And Video Tour
---	-------------	---

TaxAnnualAmount: **\$0**

Association Fee: **\$117**

✓	RoomKitchenFeatures:	Granite Counters, Remodeled Kitchen
✓	RoomBathroomFeatures:	Shower, Bathtub, Separate Tub And Shower, Soaking Tub, Walk-in Shower, Exhaust Fan(s), Granite Counters, Upgraded, Shower In Tub, Privacy Toilet Door, Double Sinks In Primary Bath

Garage Spaces: **3**

High School: **Yorba Linda**

High School 2: **Yorlin**

Middle Or Junior School:	Bernardo
--------------------------	-----------------

Elementary School:	Glen Knoll
--------------------	-------------------

High School District:	Placentia-Yorba Linda Unified
-----------------------	--------------------------------------

Levels:	Two
---------	------------

<div>✓</div> EatingArea:	Dining Room, Family Kitchen, Breakfast Nook, Separated
--------------------------	--

Taxes:	\$0
--------	------------

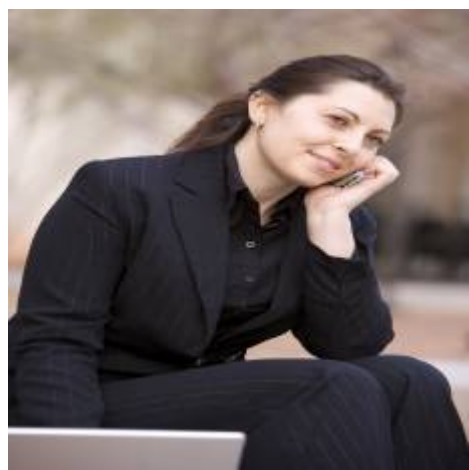
Guest House SqFt:	0
-------------------	----------

Approx Lot SqFt:	0
------------------	----------

<div>✓</div> Special Listing Conditions:	Standard
--	----------

Virtual Tour URL Unbranded:	Click Here
-----------------------------	----------------------------

Agent [Info](#)



Rina Maya
☎ 858-876-7946
☎ 800-878-0907
✉ Questions@unitedbrokersinc.net

-