

Manufactured In Park For Sale

1,440 Sqft - 1650 Clark Avenue, Santa Maria, California, 93455



Basic Details

Status:	Active
Listing Type:	For Sale
Property Type:	Manufactured In Park
Price:	\$125,000
Price Per Square Foot:	\$87
Square Footage:	1,440 Sqft
Lot Area:	0.03 Sqft
Year Built:	1986
View:	Mountain(s)
Bedrooms:	2
Bathrooms:	2
Bathrooms (Full):	2
Country:	US
State:	California
County:	Santa Barbara
City:	Santa Maria
Zipcode:	93455

Features

Association:	1
Senior Community:	1
Stories:	1
✓ Community Features:	Street Lights, Park
✓ Pool:	Association, Community
✓ Amenities:	Pool
✓ Parking:	0.00
Spa:	1
✓ Lot Features:	0-1 Unit/acre
Entry Level:	1
✓ Laundry:	Individual Room
✓ Room Type:	All Bedrooms Down
✓ Flooring:	Laminate
✓ Entry Location	
✓ Spa Construction:	Association
✓ Heating System:	Forced air
✓ Water Source:	Public

Listing ID: **PI24238461**



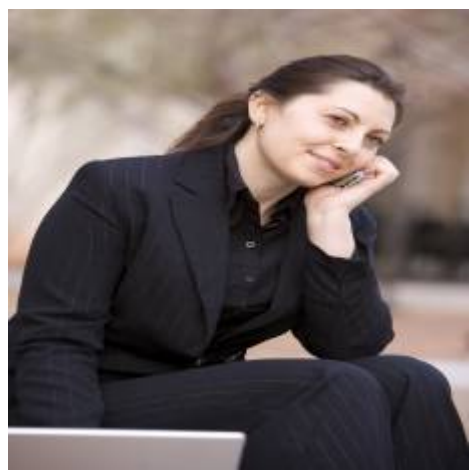
Sewer:

Public Sewer

MLS [Addon](#)

Association Fee Frequency:	Monthly
Parcel Number:	629152084
Lot Size Square Feet:	1,510
TaxAnnualAmount:	\$0
Association Fee:	\$1,128
High School:	Arlington
High School 2:	Arling
Middle Or Junior School:	Miller
High School District:	Orcutt Union
Taxes:	\$0
Guest House SqFt:	0
Approx Lot SqFt:	0
<div><div>✓</div>Special Listing Conditions:</div>	Standard

Agent [Info](#)



Rina Maya
☎ 858-876-7946
☎ 800-878-0907
✉ Questions@unitedbrokersinc.net
