

Residential Rent For Rent

800 Sqft - 133 ElmDrive, Beverly Hills, California, 90212



Basic Details

Status:	Active
Listing Type:	For Rent
Property Type:	Residential Rent
Property SubType:	Apartment
Price:	\$3,195
Price Per Square Foot:	\$4
Square Footage:	800 Sqft
Lot Area:	0.14 Sqft
Year Built:	1928
View:	Mountain(s)
Bedrooms:	2
Bathrooms:	1
Bathrooms (Full):	1
Country:	US
State:	California

Features

Association:	0
Senior Community:	0
Stories:	2
✓ Pet Policy:	Call
✓ Parking:	
✓ Parking:	Carport
Spa:	0
✓ Furnished:	Unfurnished
Entry Level:	2
✓ Laundry:	Outside
✓ Flooring:	Laminate
✓ Entry Location:	Ground Level - No Steps
✓ Property Condition:	Updated/remodeled
✓ Heating System:	electric
✓ Appliances:	Gas Range, Refrigerator

County:	Los Angeles
City:	Beverly Hills
Zipcode:	90212
Listing ID:	25550009

MLS [Addon](#)

Zoning:	BHR4YY
Parcel Number:	4331008006
Lot Size Square Feet:	6,071
TaxAnnualAmount:	\$0

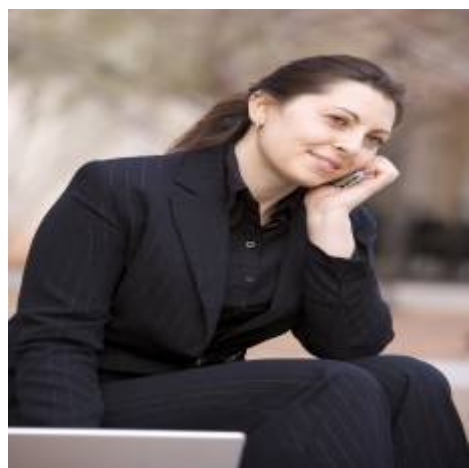
✓ RoomKitchenFeatures:	Corian Counters
------------------------	---------------------------------

High School:	Arlington
High School 2:	Arling
Middle Or Junior School:	Miller

✓ EatingArea:	Breakfast Counter / Bar
---------------	---

Lease Term :	12 Months
Taxes:	\$0
Guest House SqFt:	0
Approx Lot SqFt:	0

Agent [Info](#)



Rina Maya
☎ 858-876-7946
☎ 800-878-0907
✉ Questions@unitedbrokersinc.net

