

Residential For Sale

1,972 Sqft - 10582 PampasCourt, Adelanto,
California, 92301



Basic [Details](#)

Status: **Active**

Listing Type: **For Sale**

Property Type: **Residential**

Property SubType: **Single Family Residence**

Price: **\$460,000**

Price Per Square Foot: **\$233**

Square Footage: **1,972 Sqft**

Lot Area: **0.17 Sqft**

Year Built: **2020**

View: **Mountain(s)**

Bedrooms: **4**

Bathrooms: **3**

Bathrooms (Full): **3**

Country: **US**

State: **California**

County: **San Bernardino**

City: **Adelanto**

Zipcode: **92301**

Listing ID: **IG25128154**

Features

✓ View: [Neighborhood](#)

Association: **0**

Senior Community: **0**

✓ Common Walls: [No Common Walls](#)

Stories: **2**

✓ Community Features: [Sidewalks, Street Lights, Suburban, Curbs, Storm Drains](#)

AttachedGarage : **1**

✓ Parking: **2.00**

✓ Parking: [Paved, Garage Door Opener, Garage - Two Door, Garage, Driveway Level, Concrete, Street, Garage Faces Front, Public](#)

Spa: **0**

✓ Lot Features: [Cul-de-sac, 0-1 Unit/acre, Sprinkler System, Level With Street, Yard, Paved](#)

✓ Fence: [Vinyl](#)

✓ Security: [Fire and smoke detection system, Carbon monoxide detector\(s\), Smoke](#)

		Detector(s), Fire Sprinkler System
✓	Patio:	Covered, Patio, Patio Open, Wood, Rear Porch, Slab
✓	Electric:	Electricity - On Property, 220 Volts In Garage
Entry Level:		1
✓	Laundry:	Gas Dryer Hookup, Individual Room, Inside, Washer Hookup, Upper Level
✓	Room Type:	Family Room, Walk-in Closet, Kitchen, Laundry, Main Floor Bedroom, Primary Suite
✓	Roofing:	Tile
✓	Flooring:	Carpet, Laminate
✓	Window Features:	Double Pane Windows, Screens
✓	Entry Location:	Front
✓	Property Condition:	Turnkey
✓	Foundation Details:	Slab
✓	Exterior Features:	Lighting
✓	Interior Features:	Open Floorplan, Storage, Track Lighting, Laminate Counters
Main Level Bathrooms:		1
Main Level Bedrooms:		1
✓	Heating System:	Central
✓	Cooling System:	Whole house fan, Central Air
✓	Utilities:	Sewer Connected, Water Connected, Cable Available, Electricity Connected, Natural Gas Connected

✓	Water Source:	Public
✓	Sewer:	Public Sewer
✓	Appliances:	Dishwasher, Disposal, Built-in Range, Gas Range, Gas Water Heater, Microwave, Gas Oven, Water Heater

MLS Addon

Parcel Number: **0459811250000**

Lot Size Square Feet: **7,508**

Tax Annual Amount: **\$0**

✓	Room Kitchen Features:	Granite Counters, Remodeled Kitchen, Kitchen Open To Family Room, Tile Counters, Corian Counters
---	------------------------	--

✓	Room Bathroom Features:	Shower, Bathtub, Closet In Bathroom, Separate Tub And Shower, Soaking Tub, Walk-in Shower, Exhaust Fan(s), Linen Closet/storage, Shower In Tub, Vanity Area, Corian Counters, Main Floor Full Bath, Double Sinks In Primary Bath
---	-------------------------	--

Garage Spaces: **2**

High School: **Arlington**

High School 2: **Arling**

Middle Or Junior School: **Miller**

High School District: **Adelanto**

Levels: **Two**

✓	Eating Area:	Dining Room
---	--------------	-------------

Taxes: **\$0**

Guest House SqFt: **0**

Approx Lot SqFt: 0

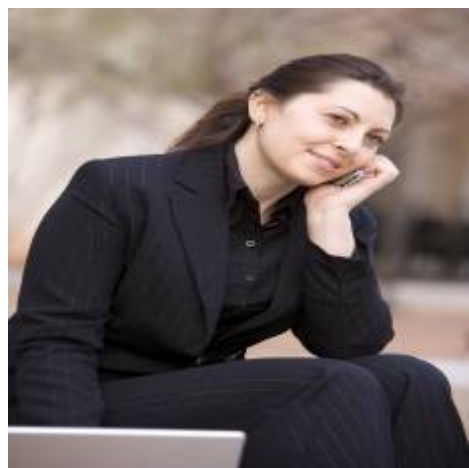
✓

Special Listing
Conditions:

Standard

Virtual Tour [Click Here](#)
URL Unbranded:

Agent [Info](#)



Rina Maya
☎ 858-876-7946
☎ 800-878-0907
✉ Questions@unitedbrokersinc.net

-
