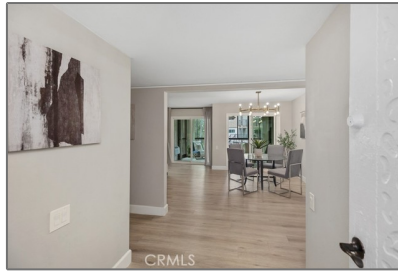


# Residential For Sale

1,148 Sqft - 3241 San Amadeo, Laguna Woods,  
California, 92637



## Basic Details

|                        |              |
|------------------------|--------------|
| Status:                | Active       |
| Listing Type:          | For Sale     |
| Property Type:         | Residential  |
| Property SubType:      | Condominium  |
| Price:                 | \$465,000    |
| Price Per Square Foot: | \$405        |
| Square Footage:        | 1,148 Sqft   |
| Lot Area:              | 5.32 Sqft    |
| Year Built:            | 1972         |
| View:                  | Mountain(s)  |
| Bedrooms:              | 2            |
| Bathrooms:             | 2            |
| Bathrooms (Full):      | 2            |
| Country:               | US           |
| State:                 | California   |
| County:                | Orange       |
| City:                  | Laguna Woods |
| Zipcode:               | 92637        |
| Listing ID:            | OC25126359   |

## Features

|                       |  |
|-----------------------|--|
| ✓ View:               | Neighborhood, Trees/woods  |
| Association:          | 1  |
| Senior Community:     | 1  |
| ✓ Common Walls:       | 1 Common Wall  |
| Stories:              | 3  |
| ✓ Community Features: | Golf, Curbs, Stable(s), Biking   |
| ✓ Pool:               | Community  |
| ✓ Amenities:          | Pool, Spa/hot Tub, Tennis Court(s), Clubhouse, Meeting Room, Bocce Ball Court, Gym/ex Room, Card Room, Cable Tv, Maintenance Grounds, Pets Permitted, Billiard Room, Pet Rules, Controlled Access, Golf Course, Trash, Sewer, Security, Water, Electricity, Pickleball |
| AttachedGarage :      | 1  |
| ✓ Parking             |  |
| ✓ Parking:            | Garage, Parking Space, Assigned  |
| Spa:                  |  |

| 1              |                     |  |
|----------------|---------------------|--|
| ✓              | Lot Features:       | 16-20 Units/acre   |
| ✓              | Security:           | Carbon monoxide detector(s), Smoke Detector(s), Gated With Attendant     |
| ✓              | Patio:              | Enclosed Glass Porch   |
| ✓              | Electric:           | Electricity - On Property  |
| Entry Level: 1 |                     |  |
| ✓              | Laundry:            | Common Area  |
| ✓              | Room Type:          | Living Room, Kitchen, All Bedrooms Down, Primary Suite                   |
| ✓              | Roofing:            | Flat   |
| ✓              | Flooring:           | Vinyl  |
| ✓              | Window Features:    | Screens, Energy Star Qualified Windows                                   |
| ✓              | Entry Location      |  |
| ✓              | Spa Construction:   | Community  |
| ✓              | Property Condition: | Updated/remodeled  |
| ✓              | Interior Features:  | Ceiling Fan(s), Unfurnished, Quartz Counters                             |
| Main Level 2   |                     |  |
| Bathrooms:     |                     |  |
| Main Level 2   |                     |  |
| Bedrooms:      |                     |  |
| ✓              | Heating System:     | Heat Pump  |
| ✓              | Cooling System:     | Heat pump  |
| ✓              | Utilities:          | Sewer Connected, Water Connected, Electricity Connected, Cable Connected |
| ✓              | Water Source:       | Public   |
| ✓              | Sewer:              | Public Sewer   |

|   |                         |  |
|---|-------------------------|--|
| ✓ | Appliances:             | Dishwasher, Disposal, Refrigerator, Free-standing Range, Electric Water Heater |
| ✓ | Accessibility Features: | Lowered Light Switches   |

## MLS Addon

|                               |   |
|-------------------------------|---|
| Association Fee Frequency:    | Monthly   |
| Parcel Number:                | 93245007  |
| Lot Size Square Feet:         | 231,567 Sqft  |
| TaxAnnualAmount:              | \$0   |
| Association Fee:              | \$880   |
| ✓ RoomKitchenFeatures:        | Quartz Counters, Remodeled Kitchen  |
| ✓ RoomBathroomFeatures:       | Walk-in Shower, Shower In Tub, Vanity Area, Low Flow Toilet(s), Quartz Counters |
| Garage Spaces:                | 1   |
| High School:                  | Arlington   |
| High School 2:                | Arling  |
| Middle Or Junior School:      | Miller  |
| High School District:         | Saddleback Valley Unified   |
| Levels:                       | One   |
| ✓ EatingArea:                 | Separated   |
| Taxes:                        | \$0   |
| Guest House SqFt:             | 0 Sqft  |
| Approx Lot SqFt:              | 0 Sqft  |
| ✓ Special Listing Conditions: | Standard  |



Rina Maya  
☎ 858-876-7946  
☎ 800-878-0907  
✉ [Questions@unitedbrokersinc.net](mailto:Questions@unitedbrokersinc.net)