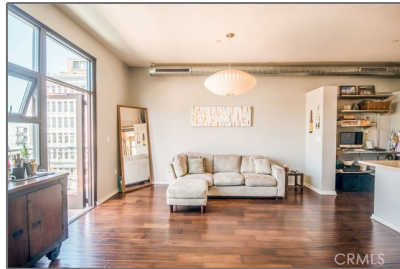


Residential Rent For Rent

910 Sqft - 133 The Promenade, Long Beach,
California, 90802



Basic Details

Status:	Active
Listing Type:	For Rent
Property Type:	Residential Rent
Property SubType:	Condominium
Price:	\$2,750
Price Per Square Foot:	\$3
Square Footage:	910 Sqft
Lot Area:	1.38 Sqft
Year Built:	2006
View:	Mountain(s)
Bedrooms:	1
Bathrooms:	1
Bathrooms (Full):	1
Country:	US
State:	California
County:	Los Angeles
City:	Long Beach
Zipcode:	90802
Listing ID:	OC25132054

Features

✓ View:	City Lights, Neighborhood
Association:	1
Senior Community:	0
✓ Common Walls:	2+ Common Walls
Stories:	5
✓ Pet Policy:	Breed restrictions, Number limit
✓ Community Features:	Sidewalks, Street Lights, Park, Curbs, Biking, Storm Drains, Urban
✓ Amenities:	Clubhouse, Gym/ex Room, Billiard Room
AttachedGarage :	1
✓ Parking:	2.00
✓ Parking:	Subterranean
✓ Security:	Gated community
✓ Furnished:	Unfurnished
✓ Inclusions	
Entry Level:	5

✓	Laundry:	In Closet
✓	Room Type:	Living Room, Laundry, Main Floor Bedroom, All Bedrooms Down
✓	Flooring:	Wood
✓	Entry Location:	On The Promenade
✓	Interior Features:	High Ceilings
Main Level Bathrooms:		
Main Level Bedrooms:		1
✓	Heating System:	Central
✓	Cooling System:	Central Air
✓	Utilities:	Cable Connected
✓	Water Source:	Public
✓	Sewer:	Public Sewer
✓	Appliances:	Dishwasher, Disposal, Free-standing Range




MLS [Addon](#)

Zoning:	LBPD
Parcel Number:	7280027114
Lot Size Square Feet:	60,230
TaxAnnualAmount:	\$0
✓ RoomBathroomFeatures:	Shower In Tub
Garage Spaces:	1
High School:	Arlington
High School 2:	Arling
Middle Or Junior School:	Miller
High School	Long Beach Unified

District:	
Levels:	One
Lease Term :	12 Months
Taxes:	\$0
Guest House SqFt:	0
Approx Lot SqFt:	0
Virtual Tour URL Unbranded:	Click Here

Agent [Info](#)



Rina Maya
 858-876-7946
 800-878-0907
 Questions@unitedbrokersinc.net

-
