

# Manufactured In Park For Sale

1,440 Sqft - 33265 LauraDrive, Thousand Palms, California, 92276



## Basic Details

Status:	Active
Listing Type:	For Sale
Property Type:	Manufactured In Park
Price:	\$150,000
Price Per Square Foot:	\$104
Square Footage:	1,440 Sqft
Lot Area:	0.12 Sqft
Year Built:	1988
View:	Mountain(s)
Bedrooms:	2
Bathrooms:	2
Bathrooms (Full):	2
Country:	US
State:	California
County:	Riverside
City:	Thousand Palms
Zipcode:	92276
Listing ID:	PW25146361

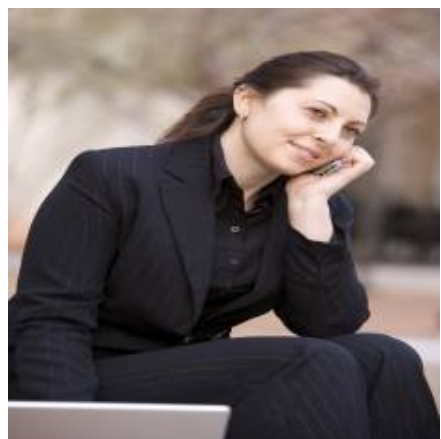
## Features

Association:	1
Senior Community:	1
Stories:	1
✓ Community Features:	Golf, Rural
✓ Pool:	Association, Community
✓ Parking:	0.00
✓ Lot Features:	Close To Clubhouse
Entry Level:	1
✓ Laundry:	Inside
✓ Entry Location:	Front Door
✓ Heating System:	Central
✓ Water Source:	Public
✓ Sewer:	Unknown

MLS [Addon](#)

Association Fee Frequency:	<b>Monthly</b>
Parcel Number:	<b>693251001</b>
Lot Size Square Feet:	<b>5,227</b>
TaxAnnualAmount:	<b>\$0</b>
Association Fee 2:	<b>\$175</b>
Association Fee:	<b>\$324</b>
Association Fee 2 Frequency:	<b>Annually</b>
High School:	<b>Arlington</b>
High School 2:	<b>Arling</b>
Middle Or Junior School:	<b>Miller</b>
High School District:	<b>Palm Springs Unified</b>
Levels:	<b>One</b>
Taxes:	<b>\$0</b>
Guest House SqFt:	<b>0</b>
Approx Lot SqFt:	<b>0</b>
<input checked="" type="checkbox"/> Special Listing Conditions:	<a href="#">Real Estate Owned</a>

Agent [Info](#)



Rina Maya  
 858-876-7946  
 800-878-0907  
 [Questions@unitedbrokersinc.net](mailto:Questions@unitedbrokersinc.net)

