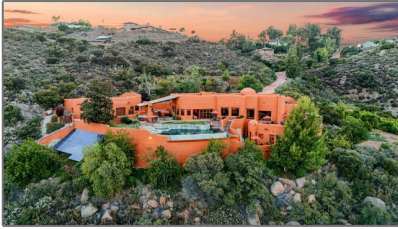


# Residential For Sale

4,820 Sqft - 2839 FirebrandDrive, Alpine,  
California, 91901



## Basic Details

Status:	Active
Listing Type:	For Sale
Property Type:	Residential
Property SubType:	Single Family Residence
Price:	\$2,914,000
Price Per Square Foot:	\$605
Square Footage:	4,820 Sqft
Lot Area:	9.29 Sqft
Year Built:	2002
View:	Mountain(s)
Bedrooms:	4
Bathrooms:	7
Bathrooms (Full):	1
Bathrooms (1/2):	2
Bathrooms (3/4):	4
State:	California
County:	San Diego
City:	Alpine
Zipcode:	91901

## Features

✓ View:	Mountain(s), Panoramic, Canyon, Rocks, Valley, Bluff, Creek/stream, River
Association:	1
Senior Community:	0
✓ Common Walls:	No Common Walls
Stories:	1
✓ Community Features:	Suburban, Hiking, Watersports, Horse Trails, Mountainous, Valley, Biking, Fishing, Lake
✓ Pool:	In ground, Private, Pebble, Infinity
✓ Amenities:	Clubhouse, Guard, Barbecue, Playground, Other, Gym/ex Room, Lake Or Pond, Pickleball
AttachedGarage :	1
✓ Parking:	15.00
Spa:	1
✓ Fireplace:	Free standing, Family room, Dining room

Listing ID:	PTP2505171	✓	Lot Features:	Back Yard, Front Yard, Cul-de-sac, Sprinkler System, Landscaped, Ranch, Rocks, Yard, Lawn
			Entry Level:	1
✓	Laundry:	Individual Room, Inside		
✓	Room Type:	Entry, Bonus Room		
✓	Roofing:	See remarks		
✓	Flooring:	Stone, Tile		
✓	Entry Location			
✓	Spa Construction:	Heated, In Ground		
✓	Foundation Details:	Concrete Perimeter, Brick/mortar		
✓	Exterior Features:	Awning(s), Lighting, Barbecue Private, Balcony		
✓	Interior Features:	High Ceilings, Open Floorplan, Pantry, Recessed Lighting, Balcony, Ceiling Fan(s), Beamed Ceilings, Copper Plumbing Full, Storage, Block Walls		
			Main Level Bathrooms:	1
			Main Level Bedrooms:	1
✓	Cooling System:	Central Air		
✓	Water Source:	Well		
✓	Appliances:	Dishwasher, Disposal, Double Oven, Built-in Range, Microwave, Refrigerator, Range Hood, Gas Cooking, Ice Maker, Water Softener, Water Heater, Built-in		

MLS Addon

Association Fee Monthly  
Frequency:

Zoning:

R-1:SINGLE FAM-RES

Parcel Number:

5202712500

Lot Size Square Feet:

404,672

TaxAnnualAmount:

\$0

Association Fee:

\$460

✓

RoomKitchenFeatures:

Kitchen Island, Kitchen Open To Family Room, Walk-in Pantry, Butler's Pantry

Garage Spaces:

5

High School:

Arlington

High School 2:

Arling

Middle Or Junior School:

Miller

High School District:

Grossmont Union

Levels:

Multi/Split

Taxes:

\$0

✓

OtherStructures:

Storage, Workshop

Guest House SqFt:

0

Approx Lot SqFt:

0

✓

Special Listing Conditions:

Standard

Virtual Tour URL Unbranded:

[Click Here](#)

Agent [Info](#)

---



Rina Maya

☎ 858-876-7946

☎ 800-878-0907

✉ [Questions@unitedbrokersinc.net](mailto:Questions@unitedbrokersinc.net)

---