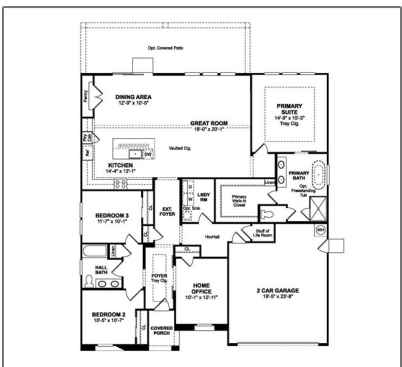


# Residential For Sale

2,127 Sqft - 14183 CambridgeStreet, Hesperia,  
California, 92344



## Basic Details

Status: **Active**

Listing Type: **For Sale**

Property Type: **Residential**

Property SubType: **Single Family Residence**

Price: **\$549,990**

Price Per Square Foot: **\$259**

Square Footage: **2,127 Sqft**

Lot Area: **0.17 Sqft**

Year Built: **2025**

View: **Mountain(s)**

Bedrooms: **3**

Bathrooms: **2**

Bathrooms (Full): **2**

Country: **US**

State: **California**

County: **San Bernardino**

City: **Hesperia**

## Features

✓ View: **Mountain(s)**

Association: **0**

Senior Community: **0**

✓ Common Walls: **No Common Walls**

Stories: **1**

✓ Community Features: **Suburban**

AttachedGarage: **1**

✓ Parking: **2.00**

✓ Parking: **Driveway, Direct Garage Access, Garage Door Opener**

Spa: **0**

✓ Lot Features: **Lot 6500-9999**

✓ Fence: **Block**

Entry Level: **1**

✓ Laundry: **Gas Dryer Hookup, Individual Room, Inside, Washer Hookup**

Zipcode:	92344	✓	Room Type:	Office, Walk-in Closet, Kitchen, Laundry, Great Room, Entry
Listing ID:	SW25155105	✓	Flooring:	Carpet, Tile, Vinyl
		✓	Window Features:	Double Pane Windows, Screens
		✓	Entry Location	
		✓	Interior Features:	Open Floorplan, Pantry, Recessed Lighting, Cathedral Ceiling(s), Granite Counters, Storage, Quartz Counters
			Main Level Bathrooms:	2
			Main Level Bedrooms:	3
		✓	Heating System:	Central
		✓	Cooling System:	Central Air
		✓	Water Source:	Public
		✓	Sewer:	Public Sewer
		✓	Appliances:	Dishwasher, Disposal, Double Oven, Gas Range, Microwave, Self Cleaning Oven, Range Hood, Free-standing Range, Propane Cooktop, Electric Water Heater

MLS [Addon](#)

Parcel Number:	0405523160000
Lot Size Square Feet:	7,449 Sqft
Lot Size Dimensions:	8953
TaxAnnualAmount:	\$0
TaxYear:	0
✓ RoomKitchenFeatures:	Kitchen Island, Quartz Counters, Walk-in Pantry

✓	RoomBathroomFeatures:	Shower, Soaking Tub, Walk-in Shower, Granite Counters, Shower In Tub, Double Sinks In Primary Bath
---	-----------------------	--

Garage Spaces:	2
----------------	---

High School:	Arlington
--------------	-----------

High School 2:	Arling
----------------	--------

Middle Or Junior School:	Miller
--------------------------	--------

High School District:	Hesperia Unified
-----------------------	------------------

Levels:	One
---------	-----

✓	EatingArea:	Area, Breakfast Counter / Bar
---	-------------	-------------------------------

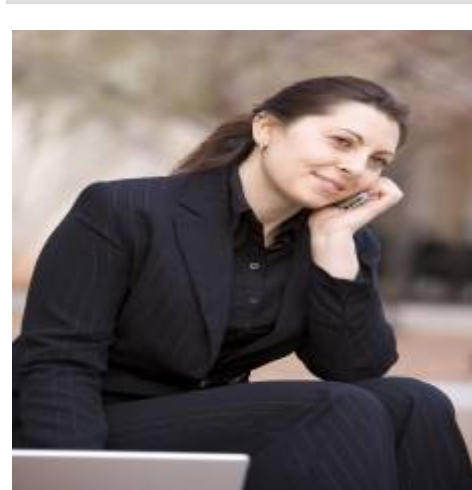
Taxes:	\$0
--------	-----

Guest House SqFt:	0 Sqft
-------------------	--------

Approx Lot SqFt:	0 Sqft
------------------	--------

✓	Special Listing Conditions:	Standard
---	-----------------------------	----------

### Agent [Info](#)



Rina Maya

858-876-7946

800-878-0907

Questions@unitedbrokersinc.net