

# Residential For Sale

1,580 Sqft - 3918 Crofton Way, South San Francisco, California, 94080



## Basic Details

Status:	Active
Listing Type:	For Sale
Property Type:	Residential
Property SubType:	Single Family Residence
Price:	\$1,298,000
Price Per Square Foot:	\$822
Square Footage:	1,580 Sqft
Lot Area:	0.06 Sqft
Year Built:	1974
View:	Mountain(s)
Bedrooms:	4
Bathrooms:	3
Bathrooms (Full):	2
Bathrooms (1/2):	1
State:	California
County:	San Mateo
City:	South San Francisco
Zipcode:	94080

## Features

✓	View:	Hills
	Association:	0
	AttachedGarage :	0
✓	Parking:	2.00
✓	Parking:	Other
✓	Fireplace:	Living room
✓	Lot Features:	Back Yard
✓	Flooring:	Laminate, See Remarks
✓	Sewer:	Public Sewer

Listing ID:	41104963
-------------	----------

MLS [Addon](#)

Parcel Number:	091811270
----------------	-----------

Lot Size Square Feet:	2,450 Sqft
-----------------------	------------

TaxAnnualAmount:	\$0
------------------	-----

<div>✓ RoomKitchenFeatures:</div> <div>Remodeled Kitchen, Stone Counters</div>
--------------------------------------------------------------------------------

Garage Spaces:	2
----------------	---

High School:	Arlington
--------------	-----------

High School 2:	Arling
----------------	--------

Middle Or Junior School:	Miller
--------------------------	--------

Levels:	One
---------	-----

Lease Term :	12 Months
--------------	-----------

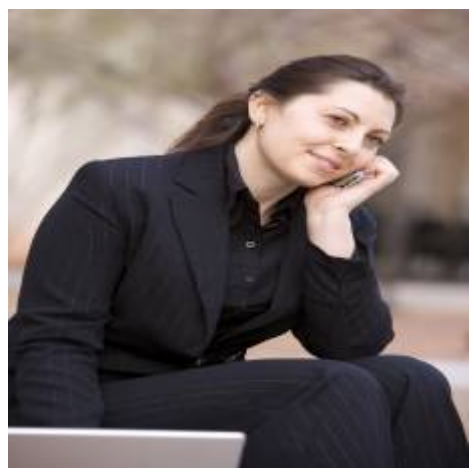
Taxes:	\$0
--------	-----

Guest House SqFt:	0 Sqft
-------------------	--------

Approx Lot SqFt:	0 Sqft
------------------	--------

Virtual Tour URL Unbranded:	<a href="#">Click Here</a>
-----------------------------	----------------------------

Agent [Info](#)



Rina Maya  
☎ 858-876-7946  
☎ 800-878-0907  
✉ [Questions@unitedbrokersinc.net](mailto:Questions@unitedbrokersinc.net)

---