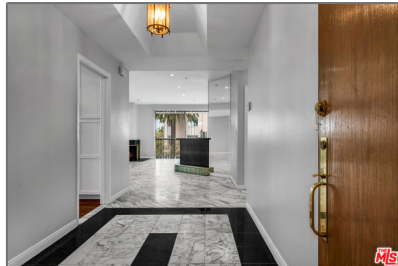


Residential Rent For Rent

2,003 Sqft - 125 GaleDrive, Beverly Hills,
California, 90211



Basic Details

Status:	Active
Listing Type:	For Rent
Property Type:	Residential Rent
Property SubType:	Condominium
Price:	\$6,150
Price Per Square Foot:	\$3
Square Footage:	2,003 Sqft
Lot Area:	0.60 Sqft
Year Built:	1982
View:	Mountain(s)
Bedrooms:	2
Bathrooms:	3
Bathrooms (Full):	2
Bathrooms (1/2):	1
Country:	US
State:	California
County:	Los Angeles
City:	Beverly Hills
Zipcode:	90211

Features

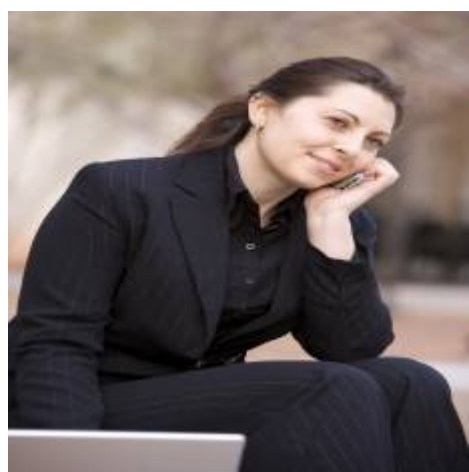
✓	View:	City Lights
Association:		0
Senior Community:		0
Stories:		1
✓	Amenities:	Controlled Access
✓	Parking:	0.00
✓	Parking:	Controlled Entrance, Assigned, Community Structure
✓	Fireplace:	Gas
✓	Furnished:	Unfurnished
✓	Laundry:	Inside, In Closet
✓	Room Type:	Living Room, Walk-in Closet, Den
✓	Flooring:	Laminate
✓	Heating System:	Central
✓	Cooling System:	Central Air
✓	Appliances:	Dishwasher, Microwave, Refrigerator

Listing ID:25565333


MLS [Addon](#)


Zoning:	BHR475
Parcel Number:	4334022099
Lot Size Square Feet:	25,997 Sqft
TaxAnnualAmount:	\$0
High School:	Arlington
High School 2:	Arling
Middle Or Junior School:	Miller
Levels:	One
Lease Term :	12 Months
Taxes:	\$0
Guest House SqFt:	0 Sqft
Approx Lot SqFt:	0 Sqft


Agent [Info](#)



Rina Maya

 858-876-7946

 800-878-0907

 Questions@unitedbrokersinc.net