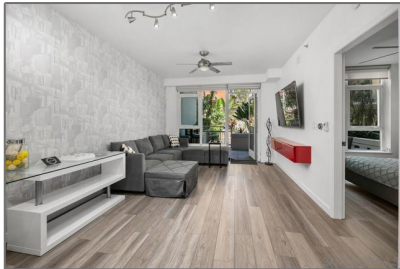


Residential For Sale

633 Sqft - 1431 Pacific Highway, San Diego,
California, 92101



Basic Details

Status:	Active
Listing Type:	For Sale
Property Type:	Residential
Property SubType:	Condominium
Price:	\$539,000
Price Per Square Foot:	\$852
Square Footage:	633 Sqft
Year Built:	2009
View:	Mountain(s)
Bedrooms:	1
Bathrooms:	1
Bathrooms (Full):	1
Country:	US
State:	California
County:	San Diego
City:	San Diego
Zipcode:	92101
Listing ID:	250033593SD

Features

Association:	1
Senior Community:	0
Stories:	1
✓ Pool:	In ground, Association, Community
✓ Amenities:	Spa/hot Tub, Clubhouse, Barbecue, Gym/ex Room, Maintenance Grounds, Trash, Water, Hot Water, Insurance
✓ Parking	
✓ Parking:	Gated, Assigned
Spa:	1
✓ Patio:	Patio
Entry Level:	1
✓ Laundry:	Electric Dryer Hookup
✓ Room Type:	See Remarks
✓ Roofing:	See remarks
✓ Flooring:	Tile
✓ Spa Construction:	Community
✓ Heating System:	Forced air, natural gas

✓	Cooling System:	Central Air
✓	Utilities:	Water Available
✓	Appliances:	Dishwasher, Disposal, Gas Range, Microwave, Refrigerator, Gas Oven, Gas Cooktop, Vented Exhaust Fan, Gas Cooking

MLS [Addon](#)

Association Fee Frequency:	Monthly
Zoning:	R-1:SINGLE
Parcel Number:	5333260722
TaxAnnualAmount:	\$0
Association Fee:	\$957
Garage Spaces:	1
High School:	Arlington
High School 2:	Arling
Middle Or Junior School:	Miller
Levels:	One
✓ EatingArea:	See Remarks
Taxes:	\$0
Guest House SqFt:	0 Sqft
Approx Lot SqFt:	0 Sqft
Virtual Tour URL Unbranded:	Click Here

Agent [Info](#)



Rina Maya

☎ 858-876-7946

☎ 800-878-0907

✉ Questions@unitedbrokersinc.net
