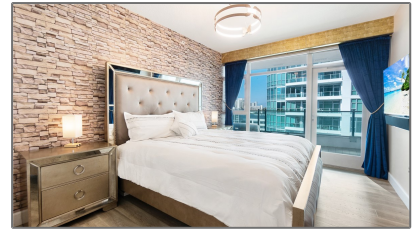


Residential For Sale

1,520 Sqft - 3131 Michelson Drive, Irvine,
California, 92612



Basic Details

Status: **Active**

Listing Type: **For Sale**

Property Type: **Residential**

Property SubType: **Condominium**

Price: **\$1,495,000**

Price Per Square Foot: **\$984**

Square Footage: **1,520 Sqft**

Lot Area: **2.32 Sqft**

Year Built: **2006**

View: **Mountain(s)**

Bedrooms: **2**

Bathrooms: **2**

Bathrooms (Full): **2**

Country: **US**

State: **California**

County: **Orange**

City: **Irvine**

Zipcode: **92612**

Features

✓ View: **City Lights**

Association: **1**

Senior Community: **0**

✓ Common Walls: **1 Common Wall**

Stories: **15**

✓ Community Features: **Street Lights**

✓ Pool: **Association**

✓ Amenities: **Pool, Clubhouse, Barbecue, Outdoor Cooking Area, Gym/ex Room, Concierge**

AttachedGarage : **0**

✓ Parking: **2.00**

✓ Fireplace: **Electric**

Entry Level: **9**

✓ Laundry: **Washer Included**

✓ Room Type: **Main Floor Bedroom, Main Floor Primary Bedroom, Primary Bathroom, Primary Bedroom**

Listing ID:	DW25154229	✓	Entry Location:	9
		✓	Interior Features:	Balcony
			Main Level Bathrooms:	2
			Main Level Bedrooms:	2
		✓	Cooling System:	Central Air
		✓	Water Source:	Public
		✓	Sewer:	Public Sewer
		✓	Appliances:	Dishwasher, Microwave, Refrigerator, Gas Oven

MLS Addon

Association Fee Frequency:	Monthly
Parcel Number:	93410783
Lot Size Square Feet:	100,845
TaxAnnualAmount:	\$0
Association Fee:	\$1,367
Garage Spaces:	2
High School:	Arlington
High School 2:	Arling
Middle Or Junior School:	Miller
High School District:	Santa Clara Unified
Levels:	One
Taxes:	\$0
Guest House SqFt:	0
Approx Lot SqFt:	0
✓ Special Listing Conditions:	Standard

Virtual Tour
URL Unbranded:

[Click Here](#)

Agent [Info](#)



Rina Maya
☎ 858-876-7946
☎ 800-878-0907
✉ Questions@unitedbrokersinc.net
