

# Residential For Sale

1,351 Sqft - 1241 Arlington Rd, Livermore,  
California, 94551



## Basic [Details](#)

Status:	<b>Active</b>
Listing Type:	<b>For Sale</b>
Property Type:	<b>Residential</b>
Property SubType:	<b>Single Family Residence</b>
Price:	<b>\$1,249,000</b>
Price Per Square Foot:	<b>\$925</b>
Square Footage:	<b>1,351 Sqft</b>
Lot Area:	<b>0.15 Sqft</b>
Year Built:	<b>1967</b>
View:	<b>Mountain(s)</b>
Bedrooms:	<b>3</b>
Bathrooms:	<b>2</b>
Bathrooms (Full):	<b>2</b>
Country:	<b>US</b>
State:	<b>California</b>
County:	<b>Alameda</b>
City:	<b>Livermore</b>
Zipcode:	<b>94551</b>

## Features

Association:	<b>0</b>
✓ Pool:	<a href="#">In ground, Gunite</a>
AttachedGarage :	<b>1</b>
✓ Parking:	<a href="#">2.00</a>
✓ Parking:	<a href="#">Garage Door Opener, Garage</a>
✓ Fireplace:	<a href="#">Gas, Living room</a>
✓ Lot Features:	<a href="#">Back Yard, Front Yard, Level With Street, Sprinklers Timer</a>
✓ Roofing:	<a href="#">Shingle</a>
✓ Flooring:	<a href="#">Wood, Carpet, Tile</a>
✓ Heating System:	<a href="#">Forced air</a>
✓ Cooling System:	<a href="#">Central Air</a>
✓ Sewer:	<a href="#">Public Sewer</a>

Listing ID:

41103722

MLS [Addon](#)

Parcel Number:

9839379

Lot Size Square Feet:

6,400 Sqft

TaxAnnualAmount:

\$0

✓

RoomKitchenFeatures:

Kitchen Island,  
Remodeled Kitchen,  
Stone Counters

Garage Spaces:

2

High School:

Arlington

High School 2:

Arling

Middle Or Junior School:

Miller

Levels:

One

Taxes:

\$0

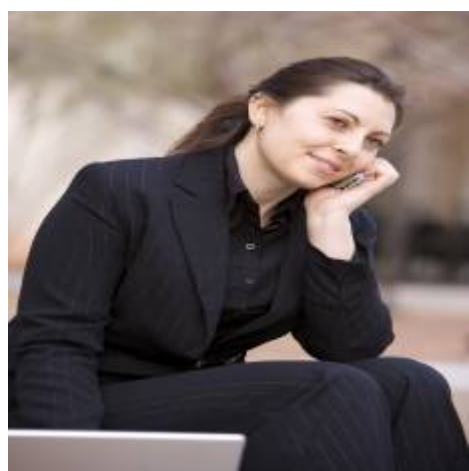
Guest House SqFt:

0 Sqft

Approx Lot SqFt:

0 Sqft

Agent [Info](#)



Rina Maya

📞

858-876-7946

📞

800-878-0907

✉

Questions@unitedbrokersinc.net