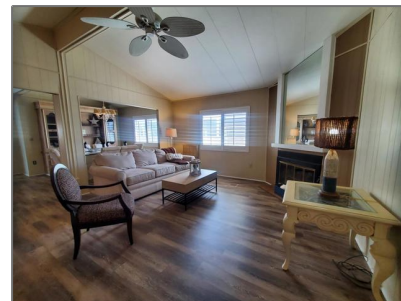


# Manufactured In Park For Sale

1,700 Sqft - 74647 AzuriteCircle, Palm Desert, California, 92260



## Basic Details

Status: **Active**

Listing Type: **For Sale**

Property Type: **Manufactured In Park**

Price: **\$350,000**

Price Per Square Foot: **\$206**

Square Footage: **1,700 Sqft**

Lot Area: **0.10 Sqft**

Year Built: **1980**

View: **Mountain(s)**

Bedrooms: **2**

Bathrooms: **2**

Bathrooms (Full): **1**

Bathrooms (3/4): **1**

Country: **US**

State: **California**

County: **Riverside**

City: **Palm Desert**

## Features

✓ View: [Peek-a-boo](#)

Association: **1**

Senior Community: **1**

Stories: **1**

✓ Community Features: [Golf](#)

✓ Pool: [In ground, Community](#)

✓ Amenities: [Tennis Court\(s\), Clubhouse, Bocce Ball Court, Gym/ex Room, Maintenance Grounds, Controlled Access, Hiking Trails](#)

AttachedGarage : **1**

✓ Parking: **0.00**

✓ Parking: [Driveway, Garage Door Opener](#)

Spa: **1**

✓ Fence: [Block](#)

✓ Security: [Gated community](#)

Zipcode:	92260	✓	Flooring:	Vinyl
Listing ID:	219133028DA	✓	Spa Construction:	Community, In Ground
		✓	Interior Features:	High Ceilings
		✓	Heating System:	Forced air
		✓	Cooling System:	Central Air, Evaporative Cooling

MLS [Addon](#)

Association Fee Frequency:	Monthly
Parcel Number:	624111006
Lot Size Square Feet:	4,356
TaxAnnualAmount:	\$0
Association Fee:	\$440
High School:	Arlington
High School 2:	Arling
Middle Or Junior School:	Miller
Levels:	One
Taxes:	\$0
Guest House SqFt:	0
Approx Lot SqFt:	0
✓ Special Listing Conditions:	Standard

Agent [Info](#)

---



Rina Maya

☎ 858-876-7946

☎ 800-878-0907

✉ [Questions@unitedbrokersinc.net](mailto:Questions@unitedbrokersinc.net)

---