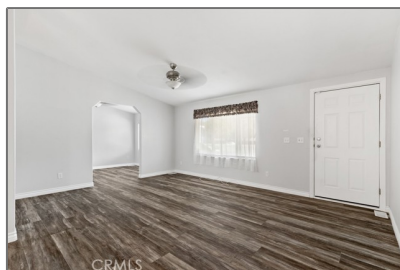


Manufactured In Park For Sale

1,344 Sqft - 601 KirbyStreet, Hemet, California, 92545



Basic Details

Status: **Active**

Listing Type: **For Sale**

Property Type: **Manufactured In Park**

Price: **\$69,900**

Price Per Square Foot: **\$52**

Square Footage: **1,344 Sqft**

Year Built: **1997**

View: **Mountain(s)**

Bedrooms: **2**

Bathrooms: **2**

Bathrooms (Full): **1**

Bathrooms (3/4): **1**

Country: **US**

State: **California**

County: **Riverside**

City: **Hemet**

Zipcode: **92545**

Listing ID: **SW25162030**

Features

✓ View: **Neighborhood**

Association: **0**

Senior Community: **1**

Stories: **1**

✓ Pet Policy: **Cats ok, Dogs ok, Number limit, Yes**

✓ Community Features: **Golf, Suburban, Curbs, Dog Park**

✓ Pool: **Heated, In ground, Gunite, Community**

✓ Parking: **4.00**

✓ Parking: **Circular Driveway, Attached Carport, Covered, Driveway Level, Carport**

Spa: **1**

✓ Lot Features: **Landscaped**

✓ Fence: **Vinyl**

✓ Patio: **Covered, Patio, Concrete, Front Porch, Rear Porch, Porch, Slab**

✓	Electric:	Electricity - On Property, Standard
✓	Inclusions:	A/v, Furniture
Entry Level:		1
✓	Laundry:	Gas Dryer Hookup, Inside, Washer Hookup, Dryer Included, Washer Included, In Kitchen, In Closet
✓	Room Type:	Living Room, Office, Walk-in Closet, Kitchen, Laundry, Main Floor Bedroom, All Bedrooms Down, Den, Main Floor Primary Bedroom, Primary Bathroom, Primary Bedroom
✓	Roofing:	Composition, Shingle
✓	Flooring:	Vinyl
✓	Window Features:	Screens, Blinds, Custom Covering
✓	Entry Location:	Off Street
✓	Spa Construction:	Community, Heated, In Ground, Gunite
✓	Property Condition:	Turnkey
✓	Foundation Details:	See Remarks
✓	Exterior Features:	Awning(s), Lighting, Rain Gutters
✓	Interior Features:	Open Floorplan, Pantry, In-law Floorplan, Cathedral Ceiling(s), Ceiling Fan(s), Storage, Formica Counters
✓	Heating System:	Central, Forced air, natural gas
✓	Cooling System:	Electric, Central Air, Wall/window Unit(s), Evaporative Cooling
✓	Utilities:	Sewer Connected, Water Connected, Cable Available, Electricity Connected, Natural Gas

		Connected, Phone Available
✓	Water Source:	Public
✓	Sewer:	Sewer Paid
✓	Appliances:	Dishwasher, Gas Range, Gas Water Heater, Refrigerator, Gas Oven, Range Hood, Water Line To Refrigerator, Water Heater
✓	Accessibility Features:	Doors - Swing In, 2+ Access Exits, No Interior Steps, Grab Bars In Bathroom(s), Entry Slope Less Than 1 Foot, Low Pile Carpeting, Disability Features

MLS Addon

Parcel Number:	009716532
TaxAnnualAmount:	\$0
✓ RoomKitchenFeatures:	Kitchen Open To Family Room, Formica Counters
✓ RoomBathroomFeatures:	Shower, Bathtub, Exhaust Fan(s), Shower In Tub, Double Sinks In Bath(s), Vanity Area, Formica Counters, Main Floor Full Bath, Double Sinks In Primary Bath
High School:	Arlington
High School 2:	Arling
Middle Or Junior School:	Miller
High School District:	Hemet Unified
Levels:	One
Taxes:	\$0
✓ OtherStructures:	Shed(s), Storage
Guest House SqFt:	0

Approx Lot SqFt: 0

✓

Special Listing
Conditions:

Standard

Agent [Info](#)



Rina Maya
☎ 858-876-7946
☎ 800-878-0907
✉ Questions@unitedbrokersinc.net

-
