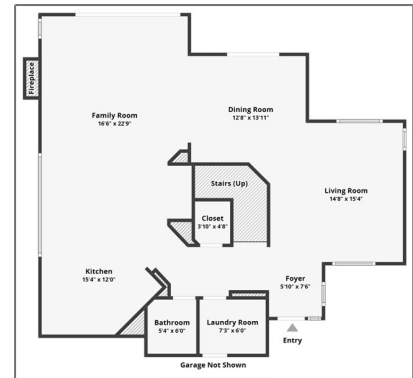


Residential For Sale

2,467 Sqft - 5530 Van GoghWay, Yorba Linda,
California, 92887



Basic Details

Status: **Active**

Listing Type: **For Sale**

Property Type: **Residential**

Property SubType: **Single Family Residence**

Price: **\$1,499,900**

Price Per Square Foot: **\$608**

Square Footage: **2,467 Sqft**

Lot Area: **0.12 Sqft**

Year Built: **1994**

View: **Mountain(s)**

Bedrooms: **4**

Bathrooms: **3**

Bathrooms (Full): **2**

Bathrooms (1/2): **1**

Country: **US**

State: **California**

County: **Orange**

Features

✓ View: **City Lights, Mountain(s), Panoramic, Trees/woods**

Association: **0**

Senior Community: **0**

✓ Common Walls: **No Common Walls**

Stories: **2**

✓ Community Features: **Curbs, Dog Park, Foothills, Biking**

✓ Pool: **Heated, In ground, Private, See remarks, Gas Heat**

AttachedGarage: **1**

✓ Parking: **3.00**

✓ Parking: **Direct Garage Access, Garage, Garage - Three Door**

Spa: **1**

✓ Fireplace: **Family room, Patio, Gas starter, Wood Burning**

✓ Lot Features: **Park Nearby, 0-1**

City:	Yorba Linda		Unit/acre
Zipcode:	92887	✓ Security:	Fire and smoke detection system
Listing ID:	IV25100000	✓ Patio:	Patio, Patio Open, Concrete, Front Porch, Slab
		✓ Electric:	220 Volts In Workshop, 220 Volts In Laundry, 220 Volts In Garage, Photovoltaics Seller Owned, 220 Volts For Spa
Entry Level:		1	
		✓ Laundry:	Individual Room, Inside
		✓ Room Type:	Family Room, Living Room, Kitchen, Laundry, All Bedrooms Up
		✓ Flooring:	Carpet, Tile
		✓ Window Features:	Double Pane Windows, Energy Star Qualified Windows
		✓ Entry Location:	Street
		✓ Spa Construction:	Heated, In Ground
		✓ Property Condition:	Turnkey
		✓ Foundation Details:	Slab
		✓ Interior Features:	Built-in Features, High Ceilings, Open Floorplan, Pantry, Recessed Lighting, Wired For Data, Cathedral Ceiling(s), Quartz Counters
Main Level		1	
Bathrooms:			
		✓ Heating System:	Central, natural gas, High efficiency, Fireplace(s), Energy Star Qualified Equipment
		✓ Cooling System:	Central Air
		✓ Utilities:	Sewer Connected, Water Connected, Electricity Connected, Natural Gas

		Connected, Underground Utilities
✓	Water Source:	Public
✓	Sewer:	Public Sewer
✓	Appliances:	Dishwasher, Gas Range, Gas Water Heater, Microwave, Gas Oven, Self Cleaning Oven, Convection Oven, Water Line To Refrigerator, Vented Exhaust Fan, Free-standing Range, Water Softener, Water Heater, Water Purifier, Energy Star Qualified Appliances

MLS Addon

Parcel Number:	35353209
Lot Size Square Feet:	5,050
TaxAnnualAmount:	\$0
✓ RoomKitchenFeatures:	Kitchen Island, Pots & Pan Drawers, Quartz Counters, Remodeled Kitchen, Kitchen Open To Family Room
✓ RoomBathroomFeatures:	Dual Shower Heads (or Multiple), Double Sinks In Primary Bath
Garage Spaces:	3
High School:	Arlington
High School 2:	Arling
Middle Or Junior School:	Travis
Elementary School:	Bryant Ranch
High School District:	Placentia-Yorba Linda Unified
Levels:	Two
✓ EatingArea:	Dining Room, Breakfast

Counter / Bar

Taxes: **\$0**

Guest House
SqFt: **0**

Approx Lot SqFt: **0**



Special Listing
Conditions:

Standard

Virtual Tour [Click Here](#)
URL Unbranded:

Agent [Info](#)



Rina Maya

☎ 858-876-7946

☎ 800-878-0907

✉ Questions@unitedbrokersinc.net
