

# Residential For Sale

2,050 Sqft - 16606 Shinedale Drive, Canyon Country, California, 91387



## Basic Details

|                        |                |
|------------------------|----------------|
| Status:                | Active         |
| Listing Type:          | For Sale       |
| Property Type:         | Residential    |
| Property SubType:      | Townhouse      |
| Price:                 | \$685,000      |
| Price Per Square Foot: | \$334          |
| Square Footage:        | 2,050 Sqft     |
| Lot Area:              | 4.08 Sqft      |
| Year Built:            | 1980           |
| View:                  | Mountain(s)    |
| Bedrooms:              | 4              |
| Bathrooms:             | 2              |
| Bathrooms (Full):      | 1              |
| Bathrooms (3/4):       | 1              |
| Country:               | US             |
| State:                 | California     |
| County:                | Los Angeles    |
| City:                  | Canyon Country |

## Features

|                       |  |
|-----------------------|--|
| Association:          | 1  |
| Senior Community:     | 0  |
| ✓ Common Walls:       | 1 Common Wall  |
| Stories:              | 1  |
| ✓ Community Features: | Sidewalks, Street Lights, Suburban, Hiking, Curbs, Foothills   |
| ✓ Pool:               | In ground, Association   |
| ✓ Amenities:          | Pool, Spa/hot Tub, Tennis Court(s), Management, Sport Court  |
| AttachedGarage :      | 1  |
| ✓ Parking:            | 2.00   |
| ✓ Parking:            | Driveway, Direct Garage Access, Paved, Garage - Single Door, Garage, Concrete, Street, Side By Side, Garage Faces Front, Driveway Up Slope From Street, Public |
| Spa:                  | 1  |
| ✓ Fireplace:          | Raised hearth, Gas, Living room, Gas starter, Masonry  |

|             |                   |
|-------------|-------------------|
| Zipcode:    | <b>91387</b>      |
| Listing ID: | <b>SR25150143</b> |

|   |               |  |
|---|---------------|--|
| ✓ | Lot Features: | Back Yard, Front Yard, Cul-de-sac, Park Nearby, Sprinkler System, Irregular Lot, Yard, Sprinklers On Side, Lawn, Sprinklers In Rear, Sprinklers In Front, Sprinklers Timer |
| ✓ | Fence:        | Good condition   |
| ✓ | Security:     | Carbon monoxide detector(s), Smoke Detector(s)   |
| ✓ | Patio:        | Covered, Patio, Patio Open, Concrete, Slab   |
| ✓ | Electric:     | Standard   |
| ✓ | Inclusions:   | Washer, Dryer, Fridge  |

Entry Level: **1**

|   |                     |   |
|---|---------------------|---|
| ✓ | Laundry:            | Gas Dryer Hookup, Washer Hookup, In Garage, Dryer Included, Washer Included   |
| ✓ | Room Type:          | Living Room, Office, Walk-in Closet, Kitchen, Main Floor Bedroom, Main Floor Primary Bedroom, Primary Bathroom, Primary Bedroom |
| ✓ | Roofing:            | Composition, Shingle, Asphalt   |
| ✓ | Flooring:           | Wood, Carpet, See Remarks   |
| ✓ | Window Features:    | Screens, Drapes   |
| ✓ | Entry Location:     | Front   |
| ✓ | Spa Construction:   | Heated, In Ground, Association  |
| ✓ | Property Condition: | Turnkey, Updated/remodeled  |
| ✓ | Foundation Details: | Slab, Permanent   |
| ✓ | Exterior Features:  | Lighting  |
| ✓ | Interior Features:  | Built-in Features, Pantry,  |

Recessed Lighting,  
Cathedral Ceiling(s),  
Ceiling Fan(s), Quartz  
Counters

Main Level  
Bathrooms: **1**

Main Level  
Bedrooms: **1**

✓ Heating System: Central, Forced air,  
natural gas, Fireplace(s)

✓ Cooling System: Central Air

✓ Utilities: Sewer Connected, Water  
Connected, Cable  
Available, Electricity  
Connected, Natural Gas  
Connected

✓ Water Source: Public

✓ Sewer: Public Sewer

✓ Appliances: Dishwasher, Gas Range,  
Gas Water Heater,  
Microwave, Refrigerator,  
Free-standing Range,  
Water Heater

## MLS Addon

Association Fee  
Frequency: **Monthly**

Zoning: **SCUR2**

Parcel Number: **2839007047**

Lot Size Square  
Feet: **177,871 Sqft**

✓ Exclusions: Garage Fridge, Garage  
Freezer, Wall Mounted  
Tv Upstairs

TaxAnnualAmou  
nt: **\$0**

Association Fee: **\$354**

✓ RoomKitchenFeatu  
res: Quartz Counters,  
Remodeled Kitchen,  
Stone Counters

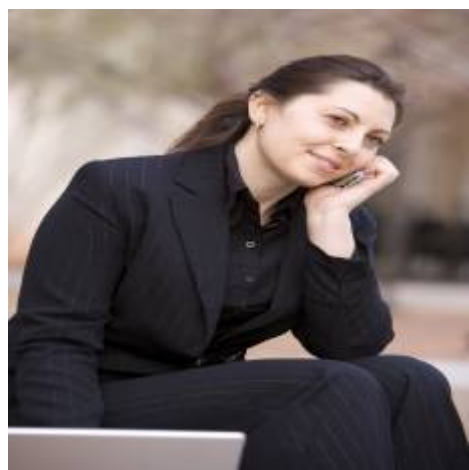
✓ RoomBathroomFeat Shower, Bathtub, Walk-in

ures:

Shower, Remodeled,  
Upgraded, Shower In  
Tub, Main Floor Full  
Bath, Double Sinks In  
Primary Bath

|   |                       |
|---|-----------------------|
| Garage Spaces:  | 2                     |
| High School:  | Canyon                |
| High School 2:  | Canyon2               |
| Middle Or Junior School:  | Siera Vista           |
| Elementary School:  | Mitchell              |
| High School District:   | William S. Hart Union |
| Levels:   | One                   |
| Taxes:  | \$0                   |
| Guest House SqFt:   | 0 Sqft                |
| Approx Lot SqFt:  | 0 Sqft                |
| <input checked="" type="checkbox"/> Special Listing Conditions: | Standard              |

Agent [Info](#)



Rina Maya  
☎ 858-876-7946  
☎ 800-878-0907  
✉ [Questions@unitedbrokersinc.net](mailto:Questions@unitedbrokersinc.net)