

Residential For Sale

2,072 Sqft - 18908 North Shore Drive, Hidden Valley Lake, California, 95467



Basic Details

Status:	Active
Listing Type:	For Sale
Property Type:	Residential
Property SubType:	Single Family Residence
Price:	\$459,000
Price Per Square Foot:	\$222
Square Footage:	2,072 Sqft
Lot Area:	0.44 Sqft
Year Built:	1989
View:	Mountain(s)
Bedrooms:	4
Bathrooms:	3
Bathrooms (Full):	2
Bathrooms (1/2):	1
Country:	US
State:	California
County:	Lake
City:	Hidden Valley Lake
Zipcode:	95467

Features

✓ View:	Neighborhood, Lake
Association:	1
Senior Community:	0
✓ Common Walls:	No Common Walls
Stories:	2
✓ Community Features:	Golf, Hiking, Park, Horse Trails, Stable(s), Dog Park, Biking, Fishing, Lake
✓ Pool:	Fenced, In ground, Association, Gunite
✓ Amenities:	Pool, Tennis Court(s), Outdoor Cooking Area, Picnic Area, Playground, Golf Course, Hiking Trails, Security, Other Courts, Pier, Dock, Dog Park, Horse Trails
AttachedGarage :	1
✓ Parking:	13.00
✓ Parking:	Driveway, Garage, Concrete, Boat
Spa:	0
✓ Fireplace:	Living room, Wood



Water front
Features:

Fishing In Community,
Across The Road From
Lake/ocean

Listing ID:

LC25150007

Burning



Lot Features:

0-1 Unit/acre, Up Slope
From Street



Fence:

Wood, Wire



Security:

Gated community,
Carbon monoxide
detector(s), Smoke
Detector(s), Gated With
Attendant



Patio:

Concrete



Electric:

220 Volts In Laundry

Entry Level:

1



Laundry:

Inside, In Closet



Room Type:

Family Room, Living
Room, Office, Kitchen,
Main Floor Bedroom,
Primary Bathroom,
Primary Bedroom



Roofing:

Composition



Flooring:

Carpet, Laminate



Window Features:

Screens



Entry Location:

Follow Path To The Front
Deck



Foundation Details:

Concrete Perimeter



Interior Features:

Cathedral Ceiling(s),
Granite Counters

Main Level

1

Bathrooms:

Main Level

1

Bedrooms:



Heating System:

Wood stove, Ductless



Cooling System:

Ductless



Utilities:

Sewer Connected, Water
Connected, Electricity
Connected



Water Source:

Public



Sewer:

Public Sewer



Appliances:

Dishwasher, Microwave,
Refrigerator, Range
Hood, Propane RangeMLS [Addon](#)

Association Fee Frequency:	Monthly
----------------------------	---------

Parcel Number:	141141240
----------------	-----------

Lot Size Square Feet:	19,166.40 Sqft
-----------------------	----------------

TaxAnnualAmount:	\$0
------------------	-----

Association Fee:	\$310
------------------	-------

RoomKitchenFeatures:	Kitchen Open To Family Room, Tile Counters
----------------------	--

RoomBathroomFeatures:	Shower, Separate Tub And Shower, Exhaust Fan(s), Granite Counters, Shower In Tub, Jetted Tub, Double Sinks In Primary Bath
-----------------------	--

Garage Spaces:	3
----------------	---

High School:	Arlington
--------------	-----------

High School 2:	Arling
----------------	--------

Middle Or Junior School:	Miller
--------------------------	--------

High School District:	Middletown Unified
-----------------------	--------------------

Levels:	Two
---------	-----

EatingArea:	Dining Room, Breakfast Counter / Bar
-------------	--------------------------------------

Taxes:	\$0
--------	-----

OtherStructures:	Gazebo
------------------	--------

Guest House SqFt:	0 Sqft
-------------------	--------

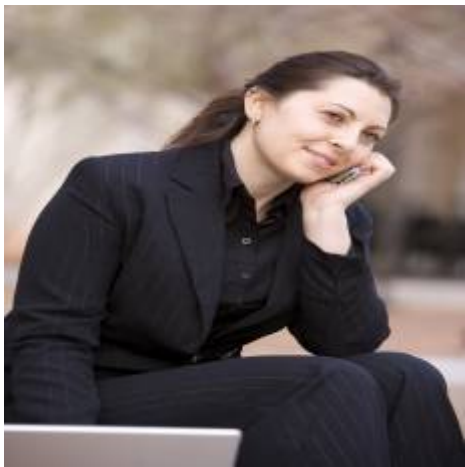
Approx Lot SqFt:	0 Sqft
------------------	--------

Special Listing	
-----------------	--

Conditions:

Standard

Agent [Info](#)



Rina Maya
☎ 858-876-7946
☎ 800-878-0907
✉ Questions@unitedbrokersinc.net

-
