

Manufactured In Park For Sale

1,344 Sqft - 21500 Lassen St, Chatsworth, California, 91311



Basic [Details](#)

Status: **Active**

Listing Type: **For Sale**

Property Type: **Manufactured In Park**

Price: **\$315,000**

Price Per Square Foot: **\$234**

Square Footage: **1,344 Sqft**

Year Built: **2007**

View: **Mountain(s)**

Bedrooms: **3**

Bathrooms: **2**

Bathrooms (Full): **2**

Country: **US**

State: **California**

County: **Los Angeles**

City: **Chatsworth**

Zipcode: **91311**

Listing ID: **SR25167284**

Features

Association: **0**

Senior Community: **0**

Stories: **1**

✓ Community Features: **Suburban**

✓ Pool: **Community**

✓ Parking: **0.00**

✓ Lot Features: **0-1 Unit/acre, Patio Home**

Entry Level: **1**

✓ Laundry: **Gas & Electric Dryer Hookup**

✓ Entry Location

✓ Cooling System: **Central Air**

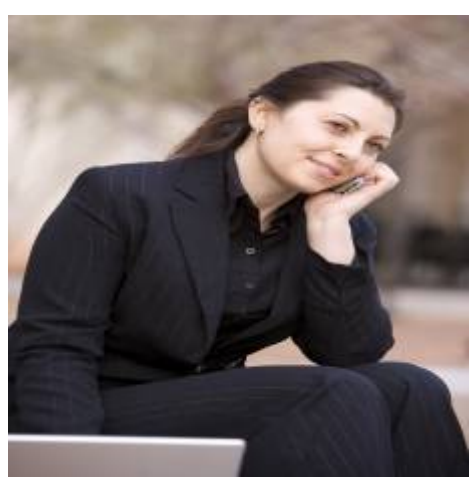
✓ Water Source: **Public**




✓ Sewer: **Public Sewer**

MLS [Addon](#)

Zoning:	CF/RS-14M
Parcel Number:	8950062180
TaxAnnualAmount:	\$0
TaxYear:	0
High School:	Arlington
High School 2:	Arling
Middle Or Junior School:	Miller
High School District:	Los Angeles Unified
Levels:	One
Taxes:	\$0
Guest House SqFt:	0 Sqft
Approx Lot SqFt:	0 Sqft
<input checked="" type="checkbox"/> Special Listing Conditions:	Standard

Agent [Info](#)



Rina Maya
 858-876-7946
 800-878-0907
 Questions@unitedbrokersinc.net