

# Residential For Sale

2,034 Sqft - 12519 HalehLane, Sylmar, California, 91342



## Basic Details

Status:	Active
Listing Type:	For Sale
Property Type:	Residential
Property SubType:	Single Family Residence
Price:	\$1,150,000
Price Per Square Foot:	\$565
Square Footage:	2,034 Sqft
Lot Area:	0.11 Sqft
Year Built:	2025
View:	Mountain(s)
Bedrooms:	4
Bathrooms:	3
Bathrooms (Full):	3
Country:	US
State:	California
County:	Los Angeles
City:	Sylmar
Zipcode:	91342

## Features

✓ View:	Neighborhood
Association:	0
Senior Community:	0
✓ Common Walls:	No Common Walls
Stories:	2
✓ Community Features:	Sidewalks, Street Lights, Suburban
AttachedGarage :	1
✓ Parking:	2.00
✓ Parking:	Driveway, Garage
Spa:	0
✓ Lot Features:	Back Yard, Front Yard, 0-1 Unit/acre, Lawn
Entry Level:	1
✓ Laundry:	Inside
✓ Room Type:	Living Room, Kitchen, Primary Bathroom, Primary Bedroom
✓ Entry Location:	Lower Level

Listing ID:	SR25165395	✓	Property Condition:	Turnkey
			Main Level Bathrooms:	3
			Main Level Bedrooms:	4
		✓	Cooling System:	Central Air
		✓	Utilities:	Sewer Connected, Water Connected, Electricity Connected, Natural Gas Connected
		✓	Water Source:	Public
		✓	Sewer:	Public Sewer
		✓	Appliances:	Disposal, Refrigerator, Gas Oven, Gas Cooktop

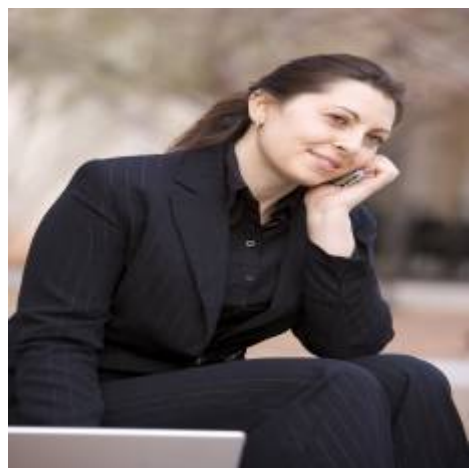
MLS Addon

Parcel Number:	2611045029
Lot Size Square Feet:	5,007 Sqft
TaxAnnualAmount:	\$0
✓ RoomKitchenFeatures:	Kitchen Island
✓ RoomBathroomFeatures:	Shower, Bathtub, Shower In Tub, Low Flow Shower, Low Flow Toilet(s)
Garage Spaces:	2
High School:	Arlington
High School 2:	Arling
Middle Or Junior School:	Miller
High School District:	Los Angeles Unified
Levels:	Two
✓ EatingArea:	Area
Taxes:	\$0

Guest House SqFt:	<b>0 Sqft</b>
Approx Lot SqFt:	<b>0 Sqft</b>
<div>✓</div> Special Listing Conditions:	<a href="#">Standard</a>

Agent [Info](#)

---



Rina Maya  
☎ 858-876-7946  
☎ 800-878-0907  
✉ [Questions@unitedbrokersinc.net](mailto:Questions@unitedbrokersinc.net)

-

---