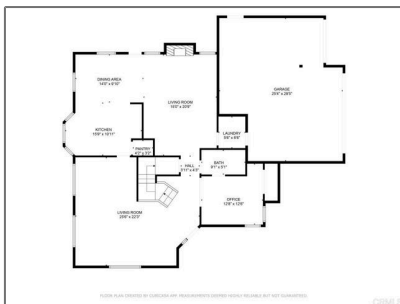


Residential For Sale

2,264 Sqft - 25250 HerefordDrive, Ramona,
California, 92065



Basic Details

Status:	Active
Listing Type:	For Sale
Property Type:	Residential
Property SubType:	Single Family Residence
Price:	\$879,900
Price Per Square Foot:	\$389
Square Footage:	2,264 Sqft
Lot Area:	0.40 Sqft
Year Built:	1998
View:	Mountain(s)
Bedrooms:	4
Bathrooms:	3
Bathrooms (Full):	3
Country:	US
State:	California
County:	San Diego
City:	Ramona
Zipcode:	92065

Features

✓ View:	Mountain(s)
Association:	1
Senior Community:	0
✓ Common Walls:	No Common Walls
Stories:	2
✓ Community Features:	Golf, Hiking, Park, Preserve/public Land, Horse Trails, Stable(s), Rural, Foothills, Biking, Blm/national Forest
✓ Amenities:	Other
AttachedGarage :	1
✓ Parking:	3.00
Spa:	0
✓ Fireplace:	Living room
✓ Lot Features:	0-1 Unit/acre
Entry Level:	1
✓ Laundry:	Individual Room
✓ Room Type:	See Remarks

Listing ID:	NDP2507331	✓ Entry Location:	Entry
		Main Level Bathrooms:	1
		Main Level Bedrooms:	1
		✓ Cooling System:	Central Air
		✓ Sewer:	Public Sewer

MLS [Addon](#)

Association Fee Frequency:	Monthly
Zoning:	R-1
Parcel Number:	2886130800
Lot Size Square Feet:	17,424
TaxAnnualAmount:	\$0
Association Fee:	\$175
Garage Spaces:	3
High School:	Arlington
High School 2:	Arling
Middle Or Junior School:	Miller
High School District:	Ramona Unified
Levels:	Two
Taxes:	\$0
Guest House SqFt:	0
Approx Lot SqFt:	0
✓ Special Listing Conditions:	Standard
Virtual Tour URL Unbranded:	Click Here



Rina Maya
☎ 858-876-7946
☎ 800-878-0907
✉ Questions@unitedbrokersinc.net