

# Manufactured In Park For Sale

1,272 Sqft - 3524 E Ave R, Palmdale, California, 93550



## Basic Details

Status: **Active**

Listing Type: **For Sale**

Property Type: **Manufactured In Park**

Price: **\$185,000**

Price Per Square Foot: **\$145**

Square Footage: **1,272 Sqft**

Year Built: **2005**

View: **Mountain(s)**

Bedrooms: **3**

Bathrooms: **2**

Bathrooms (Full): **2**

Country: **US**

State: **California**

County: **Los Angeles**

City: **Palmdale**

Zipcode: **93550**

Listing ID: **SR25170359**

## Features

Association: **0**

Senior Community: **0**

Stories: **1**

✓ Pet Policy: [Call](#)

✓ Community Features: [Suburban, Gutters](#)

✓ Pool: [Exercise pool, Community](#)

✓ Parking: [0.00](#)

✓ Parking: [Carport, Tandem Covered](#)

Spa: **1**

✓ Lot Features: [Level With Street, Rectangular Lot](#)

✓ Security: [Automatic gate, Gated community, Gated with guard, Gated With Attendant](#)

✓ Patio: [Deck, Covered, Front Porch](#)

Entry Level: **1**

✓ Laundry: [Individual Room, Inside,](#)



District:

Levels: **One**

☒ EatingArea: **Breakfast Nook**

Taxes: **\$0**

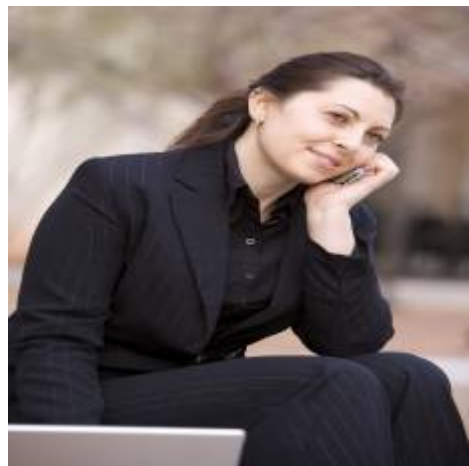
☒ OtherStructures: **Shed(s)**

Guest House **0 Sqft**  
SqFt:

Approx Lot SqFt: **0 Sqft**

☒ Special Listing Conditions: **Standard**

Agent [Info](#)



Rina Maya  
 858-876-7946  
 800-878-0907  
 [Questions@unitedbrokersinc.net](mailto:Questions@unitedbrokersinc.net)

-