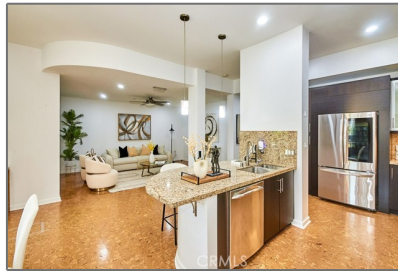


# Residential Rent For Rent

1,603 Sqft - 21 Gramercy, Irvine, California, 92612



## Basic Details

Status:	Active
Listing Type:	For Rent
Property Type:	Residential Rent
Property SubType:	Condominium
Price:	\$4,800
Price Per Square Foot:	\$3
Square Footage:	1,603 Sqft
Lot Area:	1.51 Sqft
Year Built:	2007
View:	Mountain(s)
Bedrooms:	2
Bathrooms:	2
Bathrooms (Full):	2
Country:	US
State:	California
County:	Orange
City:	Irvine
Zipcode:	92612
Listing ID:	AR25170431

## Features

✓ View:	City Lights
Association:	1
Senior Community:	0
✓ Common Walls:	2+ Common Walls
Stories:	4
✓ Pet Policy	
✓ Community Features:	Sidewalks, Street Lights, Watersports, Curbs, Dog Park, Biking
✓ Pool:	Community
✓ Amenities:	Pool, Spa/hot Tub, Tennis Court(s), Clubhouse, Barbecue, Sport Court, Gym/ex Room, Sauna, Dog Park, Pickleball
AttachedGarage :	1
✓ Parking:	2.00
✓ Parking:	Assigned
Spa:	1
✓ Lot Features:	Close To Clubhouse, 36-40 Units/acre
✓ Security:	Fire and smoke detection system, Smoke

		Detector(s), Fire Sprinkler System
✓	Furnished:	Unfurnished
✓	Electric:	Standard
✓	Inclusions:	Washer, Dryer, Refrigerator
Entry Level:		<b>1</b>
✓	Laundry:	Individual Room
✓	Room Type:	Living Room, Kitchen, Laundry, Primary Suite
✓	Entry Location	
✓	Spa Construction:	Association
✓	Foundation Details:	Combination
✓	Interior Features:	Recessed Lighting, Granite Counters, Living Room Balcony, Storage
Main Level Bathrooms:		<b>2</b>
Main Level Bedrooms:		<b>2</b>
✓	Heating System:	Central
✓	Cooling System:	Central Air
✓	Utilities:	Sewer Connected, Water Connected, Electricity Connected, Natural Gas Connected
✓	Water Source:	Public
✓	Sewer:	Public Sewer
✓	Appliances:	Dishwasher, Built-in Range, Gas Water Heater, Microwave, Refrigerator, Gas Oven, Gas Cooktop, Range Hood
✓	Accessibility Features:	Grab Bars In Bathroom(s)

MLS [Addon](#)


Association Fee Frequency:	<b>Monthly</b>
----------------------------	----------------


Parcel Number:	<b>93024656</b>
----------------	-----------------

Lot Size Square Feet:	<b>65,626 Sqft</b>
-----------------------	--------------------

TaxAnnualAmount:	<b>\$0</b>
------------------	------------

Association Fee 2 Frequency:	<b>Monthly</b>
------------------------------	----------------

 RoomKitchenFeatures:	<a href="#">Granite Counters, Kitchen Open To Family Room</a>
--	---

 RoomBathroomFeatures:	<a href="#">Shower, Bathtub, Separate Tub And Shower, Walk-in Shower, Granite Counters, Privacy Toilet Door, Double Sinks In Primary Bath</a>
---	---

Garage Spaces:	<b>2</b>
----------------	----------


High School:	<b>Arlington</b>
--------------	------------------

High School 2:	<b>Arling</b>
----------------	---------------

Middle Or Junior School:	<b>Miller</b>
--------------------------	---------------

High School District:	<b>Santa Ana Unified</b>
-----------------------	--------------------------

Levels:	<b>One</b>
---------	------------

 EatingArea:	<a href="#">Dining Room, Breakfast Counter / Bar</a>
---	--

Lease Term :	<b>12 Months</b>
--------------	------------------

Taxes:	<b>\$0</b>
--------	------------

Guest House SqFt:	<b>0 Sqft</b>
-------------------	---------------

Approx Lot SqFt:	<b>0 Sqft</b>
------------------	---------------

Virtual Tour URL Unbranded:	<a href="#">Click Here</a>
-----------------------------	----------------------------

Agent [Info](#)



Rina Maya

☎ 858-876-7946

☎ 800-878-0907

✉ [Questions@unitedbrokersinc.net](mailto:Questions@unitedbrokersinc.net)

---