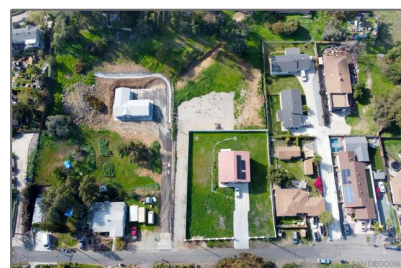
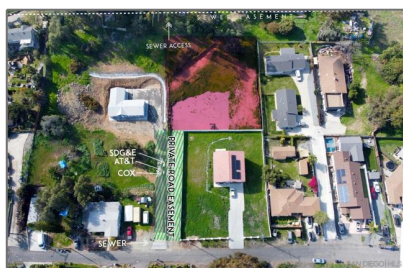


# Land For Sale

- 0 Echo Dr, La Mesa, California, 91941



## Basic Details

Status:	Active
Listing Type:	For Sale
Property Type:	Land
Property SubType:	Single Family Residence
Price:	\$419,999
Lot Area:	0.51 Sqft
View:	Mountain(s)
Bathrooms:	3
Country:	US
State:	California
County:	San Diego
City:	La Mesa
Zipcode:	91941
Listing ID:	250035164SD

## Features

✓ View:	Panoramic
Senior Community:	0
✓ Common Walls:	No Common Walls
Stories:	2
✓ Amenities:	Pool, Spa/hot Tub, Tennis Court(s), Playground, Sport Court
AttachedGarage :	1
✓ Parking:	Driveway, Direct Garage Access
Spa:	1
Entry Level:	1
✓ Laundry:	Individual Room
✓ Flooring:	Vinyl
✓ Window Features:	Double Pane Windows
✓ Entry Location:	Main Gate
✓ Spa Construction:	Community
✓ Property Condition:	Turnkey, Updated/remodeled
✓ Interior Features:	High Ceilings, Open Floorplan, Recessed

Lighting, Storage

Main Level Bathrooms: 1

✓ Utilities: See Remarks

✓ Appliances: Dishwasher, Gas Oven

MLS Addon

Zoning:	R-1:SINGLE
Parcel Number:	4994924600
Lot Size Square Feet:	22,215 Sqft
TaxAnnualAmount:	\$0
TaxYear:	0
✓ RoomKitchenFeatures:	Kitchen Island, Remodeled Kitchen, Kitchen Open To Family Room
✓ RoomBathroomFeatures:	Shower, Bathtub, Remodeled, Shower In Tub, Double Sinks In Bath(s), Double Sinks In Primary Bath
High School:	Portola
High School 2:	Porto
Middle Or Junior School:	Jeffery Trail
Elementary School:	Portola
High School District:	Irvine Unified
Levels:	Two
Taxes:	\$0
Guest House SqFt:	0 Sqft
Approx Lot SqFt:	0 Sqft

Virtual Tour URL Unbranded: [Click Here](#)



Rina Maya  
☎ 858-876-7946  
☎ 800-878-0907  
✉ [Questions@unitedbrokersinc.net](mailto:Questions@unitedbrokersinc.net)