

Residential For Sale

5,713 Sqft - 14106 Summit Crest, Escondido,
California, 92025



Basic [Details](#)

Status: **Active**

Listing Type: **For Sale**

Property Type: **Residential**

Property SubType: **Single Family Residence**

Price: **\$3,500,000**

Price Per Square Foot: **\$613**

Square Footage: **5,713 Sqft**

Lot Area: **30.36 Sqft**

Year Built: **2005**

View: **Mountain(s)**

Bedrooms: **5**

Bathrooms: **6**

Bathrooms (Full): **4**

Bathrooms (1/2): **2**

Country: **US**

State: **California**

County: **San Diego**

City: **Escondido**

Features

✓ View: **Mountain(s), Neighborhood, Panoramic, Hills, Trees/woods, Rocks, Valley, Pasture, Pool, Meadow, Vineyard**

Association: **0**

Senior Community: **0**

✓ Common Walls: **No Common Walls**

Stories: **1**

✓ Community Features: **Rural, Valley**

✓ Pool: **Heated, Permits, In ground, Solar heat, Gunite, Heated with propane, Heated passively, Salt Water**

AttachedGarage : **1**

✓ Parking: **10.00**

✓ Parking: **Gated, Driveway, Auto Driveway Gate, Garage Door Opener, Garage, Workshop In Garage, Concrete, Controlled Entrance, Rv Access/parking, Oversized**

Zipcode:	92025
Listing ID:	NDP2406639

Spa:	1
✓ Fireplace:	Raised hearth, Gas, Living room, Family room, Primary Bedroom
✓ Lot Features:	Sprinkler System, Agricultural, Irregular Lot, Rocks, Horse Property Unimproved, Sprinklers On Side, Lot Over 40000 Sqft, Secluded, Sprinklers In Rear, Up Slope From Street, Sprinklers In Front, Sprinklers Timer
✓ Fence:	Partial, See remarks, Security
✓ Security:	Automatic gate, Fire and smoke detection system, Gated community, Card/code access, Carbon monoxide detector(s), Fire rated drywall, Wired for alarm system, Smoke Detector(s), Fire Sprinkler System, Closed Circuit Camera(s)
✓ Patio:	Covered, Patio, Rear Porch, Porch
✓ Electric:	Electricity - On Property, 220 Volts, 220 Volts In Laundry, 220 Volts In Kitchen
✓ Inclusions:	Washer, Dryer, Refrigerators Included In The Sale. Will Consider Including Certain Furniture As Well.

Entry Level:	1
✓ Laundry:	Electric Dryer Hookup, Individual Room, Washer Hookup, Dryer Included, Washer Included, Propane Dryer Hookup
✓ Room Type:	Family Room, Formal Entry, Living Room, Office, Walk-in Closet, Kitchen, Laundry, Walk-in Pantry, Main Floor Bedroom, Den, See Remarks, Entry, Bonus

		Room, Exercise Room, Wine Cellar, Center Hall, Main Floor Primary Bedroom, Primary Suite, Primary Bathroom, Primary Bedroom
✓	Roofing:	Tile, Clay
✓	Flooring:	Stone, Tile
✓	Window Features:	Double Pane Windows, Screens, Custom Covering, Skylight(s), Drapes
✓	Entry Location:	One-story Home, No Steps To The Entry, Level-in
✓	Spa Construction:	Heated, In Ground, Gunitite, Private, Solar Heated
✓	Property Condition:	Turnkey
✓	Foundation Details:	Concrete Perimeter
✓	Exterior Features:	Lighting, Barbecue Private, Rain Gutters, Satellite Dish
✓	Interior Features:	Built-in Features, Crown Molding, High Ceilings, Pantry, Recessed Lighting, Vacuum Central, Wired For Data, Wired For Sound, Cathedral Ceiling(s), Ceiling Fan(s), Granite Counters, Copper Plumbing Full, Storage, Bar

Main Level Bathrooms: **6**

Main Level Bedrooms: **5**

✓	Heating System:	Central, Forced air, Zoned, Propane, Fireplace(s)
✓	Cooling System:	Zoned, Seer rated 16+, Central Air
✓	Utilities:	Electricity Connected, Propane, See Remarks

✓	Sewer:	Conventional Septic
✓	Appliances:	Dishwasher, Disposal, Double Oven, Gas & Electric Range, Electric Oven, Gas Water Heater, Microwave, Refrigerator, Self Cleaning Oven, Convection Oven, Range Hood, Water Line To Refrigerator, Vented Exhaust Fan, Ice Maker, Water Softener, Freezer, Water Heater, Built-in, Warming Drawer, Propane Water Heater
✓	Accessibility Features:	Doors - Swing In, Parking, 2+ Access Exits, No Interior Steps, 32 Inch Or More Wide Doors, 48 Inch Or More Wide Halls

MLS Addon

Zoning:	Zoning: Agricultural, A-70. Use Code:...
Parcel Number:	2411004500
Lot Size Square Feet:	1,322,481.60
TaxAnnualAmount:	\$0
✓ RoomKitchenFeatures:	Granite Counters, Kitchen Island, Pots & Pan Drawers, Kitchen Open To Family Room, Walk-in Pantry, Butler's Pantry, Utility Sink
✓ RoomBathroomFeatures:	Shower, Bathtub, Closet In Bathroom, Separate Tub And Shower, Soaking Tub, Walk-in Shower, Exhaust Fan(s), Granite Counters, Shower In Tub, Dual Shower Heads (or Multiple), Jetted Tub, Low Flow Toilet(s), Privacy Toilet Door, Double Sinks In Primary Bath
Garage Spaces:	4

High School: **San Pasqual**

High School 2: **Sanpaq**

Middle Or Junior School: **Miller**

High School District: **San Pasqual Union**

Levels: **One**

☒ EatingArea: Dining Room, In Kitchen, Breakfast Counter / Bar, Breakfast Nook

Taxes: **\$0**

☒ OtherStructures: Shed(s)

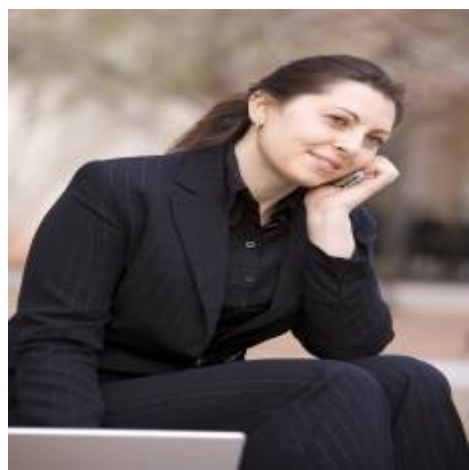
Guest House SqFt: **0**




Approx Lot SqFt: **0**

☒ Special Listing Conditions: Trust

Virtual Tour URL Unbranded: [Click Here](#)

Agent [Info](#)



Rina Maya
 858-876-7946
 800-878-0907
 Questions@unitedbrokersinc.net