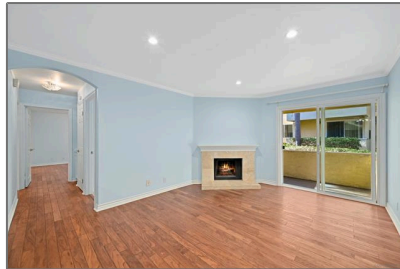


# Residential For Sale

850 Sqft - 9939 Erma Rd, San Diego, California, 92131



## Basic Details

Status:	Active
Listing Type:	For Sale
Property Type:	Residential
Property SubType:	Condominium
Price:	\$545,000
Price Per Square Foot:	\$641
Square Footage:	850 Sqft
Year Built:	1984
View:	Mountain(s)
Bedrooms:	2
Bathrooms:	2
Bathrooms (Full):	2
Country:	US
State:	California
County:	San Diego
City:	San Diego
Zipcode:	92131
Listing ID:	250035103SD

## Features

Association:	1
Senior Community:	0
Stories:	2
✓ Pool:	Community
✓ Amenities:	Pool, Maintenance Grounds, Trash, Sewer, Security, Water, Hot Water, Insurance, Pest Control
✓ Parking	
✓ Parking:	Other, Assigned
Spa:	1
✓ Fireplace:	Living room
✓ Lot Features:	Sprinkler System
Entry Level:	1
✓ Laundry:	Inside, Washer Hookup
✓ Room Type:	Family Room, Living Room, Walk-in Closet, Kitchen, Main Floor Bedroom, Utility Room, Primary Bathroom, Primary Bedroom
✓ Roofing:	Shingle
✓ Flooring:	

		Wood, Carpet
✓	Spa Construction:	Community
✓	Interior Features:	Granite Counters
✓	Heating System:	Forced air, electric
✓	Cooling System:	Electric
✓	Utilities:	Water Available
✓	Appliances:	Dishwasher, Electric Oven, Microwave, Refrigerator, Electric Cooktop, Electric Cooking

## MLS Addon

Association Fee Frequency:	Monthly
Zoning:	R-1:SINGLE
Parcel Number:	3191804219
TaxAnnualAmount:	\$0
Association Fee:	\$444
High School:	Arlington
High School 2:	Arling
Middle Or Junior School:	Miller
Levels:	Two
✓ EatingArea:	Area
Taxes:	\$0
Guest House SqFt:	0
Approx Lot SqFt:	0

## Agent Info



Rina Maya

☎ 858-876-7946

☎ 800-878-0907

✉ [Questions@unitedbrokersinc.net](mailto:Questions@unitedbrokersinc.net)

---