

Residential For Sale

1,004 Sqft - 1420 Hilltop Drive, Chula Vista,
California, 91911



Basic Details

Status:	Active
Listing Type:	For Sale
Property Type:	Residential
Property SubType:	Condominium
Price:	\$440,000
Price Per Square Foot:	\$438
Square Footage:	1,004 Sqft
Lot Area:	2.45 Sqft
Year Built:	1971
View:	Mountain(s)
Bedrooms:	2
Bathrooms:	2
Bathrooms (Full):	2
State:	California
County:	San Diego
City:	Chula Vista
Zipcode:	91911
Listing ID:	PTP2505849

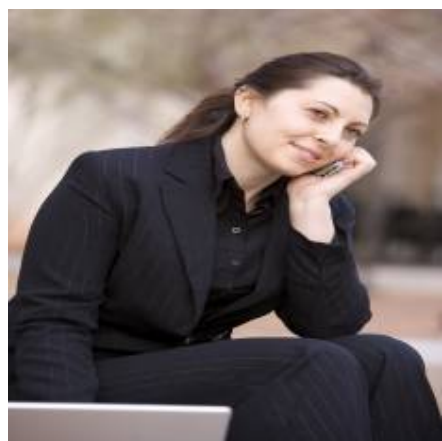
Features

✓ View:	Pool
Association:	1
Senior Community:	0
✓ Common Walls:	2+ Common Walls, No One Above
Stories:	2
✓ Community Features:	Sidewalks, Urban
✓ Pool:	Community
✓ Amenities:	Pool, Trash, Sewer, Security, Water, Hot Water, Storage, Insurance
✓ Parking:	2.00
Spa:	0
Entry Level:	2
✓ Laundry:	In Closet
✓ Room Type:	Living Room, Laundry, Primary Bathroom, Primary Bedroom
✓ Entry Location:	2

MLS [Addon](#)

Association Fee Frequency:	Monthly
Zoning:	R-1:SINGLE FAM-RES
Parcel Number:	6230721314
Lot Size Square Feet:	106,722 Sqft
TaxAnnualAmount:	\$0
Association Fee:	\$600
High School:	Arlington
High School 2:	Arling
Middle Or Junior School:	Miller
High School District:	Sweetwater Union
Levels:	One
Taxes:	\$0
Guest House SqFt:	0 Sqft
Approx Lot SqFt:	0 Sqft
<input checked="" type="checkbox"/> Special Listing Conditions:	Standard
Virtual Tour URL Unbranded:	Click Here

Agent [Info](#)



Rina Maya
☎ 858-876-7946
☎ 800-878-0907
✉ Questions@unitedbrokersinc.net

