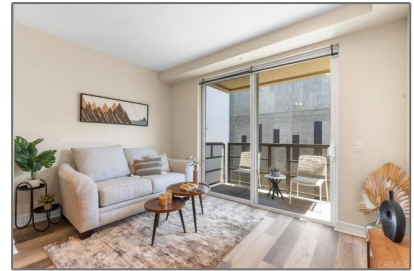


Residential For Sale

667 Sqft - 1225 Island Avenue, San Diego,
California, 92101



Basic Details

Status:	Active
Listing Type:	For Sale
Property Type:	Residential
Property SubType:	Condominium
Price:	\$509,000
Price Per Square Foot:	\$763
Square Footage:	667 Sqft
Lot Area:	0.65 Sqft
Year Built:	2005
View:	Mountain(s)
Bedrooms:	1
Bathrooms:	1
Bathrooms (Full):	1
Country:	US
State:	California
County:	San Diego
City:	San Diego
Zipcode:	92101
Listing ID:	PTP2505847

Features

✓ View:	Neighborhood
Association:	1
Senior Community:	0
✓ Common Walls:	2+ Common Walls
Stories:	6
✓ Community Features:	Sidewalks, Street Lights, Curbs
✓ Amenities:	Spa/hot Tub, Maintenance Grounds, Trash, Sewer, Water, Insurance
AttachedGarage :	1
✓ Parking	
Spa:	0
Entry Level:	6
✓ Laundry:	Gas Dryer Hookup
✓ Room Type:	Living Room, Kitchen, Primary Bathroom, Primary Bedroom
✓ Entry Location:	2nd Floor Building Entry, Front Location
✓ Cooling System:	Central Air

MLS [Addon](#)

Association Fee Frequency:	Monthly
Zoning:	R-1:SINGLE FAM-RES
Parcel Number:	5351561347
Lot Size Square Feet:	28,509 Sqft
TaxAnnualAmount:	\$0
Association Fee:	\$478
Garage Spaces:	1
High School:	Arlington
High School 2:	Arling
Middle Or Junior School:	Miller
High School District:	San Diego Unified
Levels:	One
Taxes:	\$0
Guest House SqFt:	0 Sqft
Approx Lot SqFt:	0 Sqft
<div><div>✓</div><div>Special Listing Conditions:</div></div>	<div>Standard</div>
Virtual Tour URL Unbranded:	Click Here

Agent [Info](#)



Rina Maya

☎ 858-876-7946

☎ 800-878-0907

✉ Questions@unitedbrokersinc.net
