

Manufactured In Park For Sale

1,029 Sqft - 94 Yorktown, Newport Beach, California, 92660



Basic Details

Status: **Active**

Listing Type: **For Sale**

Property Type: **Manufactured In Park**

Price: **\$459,000**

Price Per Square Foot: **\$446**

Square Footage: **1,029 Sqft**

Lot Area: **12.75 Sqft**

Year Built: **1962**

View: **Mountain(s)**

Bedrooms: **2**

Bathrooms: **2**

Bathrooms (Full): **2**

Country: **US**

State: **California**

County: **Orange**

City: **Newport Beach**

Zipcode: **92660**

Features

Association: **0**

Senior Community: **0**

Stories: **1**

✓ Community Features: **Sidewalks, Street Lights, Suburban, Hiking, Park, Curbs, Dog Park, Biking**

✓ Pool: **Community**

AttachedGarage : **1**

✓ Parking: **2.00**

✓ Parking: **Guest, Attached Carport, Carport**

Spa: **1**

✓ Lot Features: **Lot 10000-19999 Sqft**

✓ Security: **Carbon monoxide detector(s), Smoke Detector(s)**

✓ Patio: **Patio Open, Brick**

✓ Electric: **Standard**

✓ Inclusions

Entry Level: **1**

✓

Water front Features:

Across The Road From Lake/ocean

Listing ID:OC25176182

✓

Laundry:

Individual Room, Dryer Included, Washer Included, Outside

✓

Room Type:

Living Room, Kitchen, Laundry, Main Floor Bedroom, All Bedrooms Down, Main Floor Primary Bedroom, Primary Bathroom, Primary Bedroom

✓

Roofing:

Shingle

✓

Flooring:

Laminate

✓

Window Features:

Double Pane Windows

✓

Entry Location

✓

Spa Construction:

Community

✓

Property Condition:

Turnkey

✓

Foundation Details:

Slab, Pier Jacks, Pillar/post/pier, Block

✓

Exterior Features:

Awning(s), Rain Gutters

✓

Interior Features:

Crown Molding, Ceiling Fan(s), Block Walls, Quartz Counters

✓

Heating System:

Central, Fireplace(s)

✓

Utilities:

Electricity Available, Water Available, Cable Available, Phone Available, See Remarks, Sewer Available

✓

Water Source:

Public

✓

Sewer:

Public Sewer

✓

Appliances:

Disposal, Microwave, Refrigerator, Gas Oven, Gas Cooktop, Range Hood, Ice Maker, Water Heater

✓

Accessibility Features:

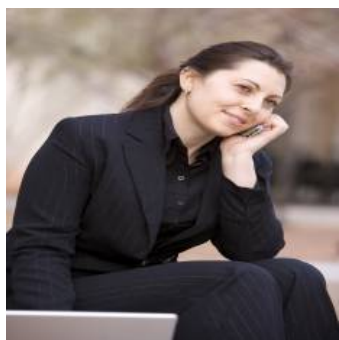
Parking

MLS Addon

Zoning:R-1:SINGLE

Parcel Number:	89221094
Lot Size Square Feet:	555,390 Sqft
TaxAnnualAmount:	\$0
<div>✓</div> RoomKitchenFeatures:	Quartz Counters, Remodeled Kitchen
<div>✓</div> RoomBathroomFeatures:	Shower, Bathtub, Closet In Bathroom, Walk-in Shower, Shower In Tub, Quartz Counters, Main Floor Full Bath
Garage Spaces:	1
High School:	Corona Del Mar
High School 2:	Codema
Middle Or Junior School:	Corona Del Mar
Elementary School:	Abraham Lincoln
High School District:	Newport Mesa Unified
Levels:	One
Taxes:	\$0
Guest House SqFt:	0 Sqft
Approx Lot SqFt:	0 Sqft
<div>✓</div> Special Listing Conditions:	Standard
Virtual Tour URL Unbranded:	Click Here

Agent [Info](#)



Rina Maya
📞 858-876-7946
📞 800-878-0907
✉ Questions@unitedbrokersinc.net

