

Residential For Sale

1,992 Sqft - 11032 Aletta Avenue, Culver City,
California, 90232



Basic Details

Status:	Active
Listing Type:	For Sale
Property Type:	Residential
Property SubType:	Duplex
Price:	\$1,399,000
Price Per Square Foot:	\$702
Square Footage:	1,992 Sqft
Lot Area:	0.13 Sqft
Year Built:	1920
View:	Mountain(s)
Bedrooms:	4
Bathrooms:	3
Bathrooms (Full):	3
Country:	US
State:	California
County:	Los Angeles
City:	Culver City
Zipcode:	90232
Listing ID:	PV25175546

Features

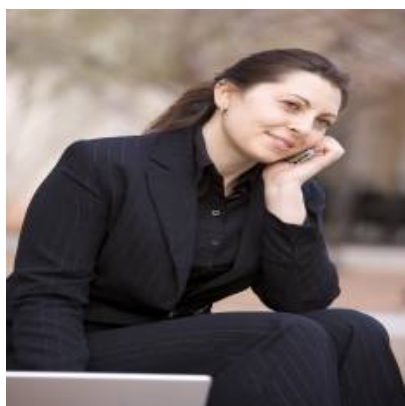
✓ View:	Neighborhood
Association:	0
Senior Community:	0
✓ Common Walls:	No Common Walls
Stories:	1
✓ Community Features:	Sidewalks, Suburban
AttachedGarage :	1
✓ Parking:	2.00
✓ Parking:	Driveway, Direct Garage Access, Garage Faces Front
✓ Lot Features:	0-1 Unit/acre
Entry Level:	1
✓ Laundry:	In Garage
✓ Room Type:	Main Floor Primary Bedroom
✓ Entry Location:	Front
Main Level Bathrooms:	3

Main Level Bedrooms:	4
✓ Water Source:	Public
✓ Sewer:	Public Sewer

MLS [Addon](#)

Zoning:	CCR2*
Parcel Number:	4213009007
Lot Size Square Feet:	5,605 Sqft
TaxAnnualAmount:	\$0
Garage Spaces:	2
High School:	Arlington
High School 2:	Arling
Middle Or Junior School:	Miller
High School District:	Culver City Unified
Levels:	One
Taxes:	\$0
Guest House SqFt:	0 Sqft
Approx Lot SqFt:	0 Sqft
✓ Special Listing Conditions:	Standard

Agent [Info](#)



Rina Maya
 ☎ 858-876-7946
 ☎ 800-878-0907
 ✉ Questions@unitedbrokersinc.net

