

Residential For Sale

1,632 Sqft - 30949 Palmetto Palm Avenue,
Homeland, California, 92548



Basic Details

Status: **Active**

Listing Type: **For Sale**

Property Type: **Residential**

Property SubType: **Single Family Residence**

Price: **\$269,000**

Price Per Square Foot: **\$165**

Square Footage: **1,632 Sqft**

Lot Area: **0.11 Sqft**

Year Built: **1978**

View: **Mountain(s)**

Bedrooms: **2**

Bathrooms: **2**

Bathrooms (Full): **2**

Country: **US**

State: **California**

County: **Riverside**

City: **Homeland**

Zipcode: **92548**

Listing ID: **IV25097011**

Features

✓ View: **Mountain(s), Hills**

Association: **1**

Senior Community: **1**

✓ Common Walls: **No Common Walls**

Stories: **1**

✓ Community Features: **Street Lights, Golf, Curbs, Biking**

✓ Pool: **Filtered, In ground, Association, Gunite**

✓ Amenities: **Spa/hot Tub, Clubhouse, Meeting Room, Barbecue, Picnic Area, Gym/ex Room, Card Room, Maintenance Grounds, Billiard Room, Banquet Facilities, Recreation Room, Golf Course, Common Rv Parking**

✓ Parking: **3.00**

✓ Parking: **Driveway, Attached Carport, Covered, Driveway Level, Concrete, Oversized**

Spa: **1**

✓ Lot Features: **Front Yard, Close To Clubhouse, 0-1 Unit/acre, Level With Street,**

		Corners Marked
✓	Security:	Carbon monoxide detector(s), Security system, Smoke Detector(s)
✓	Patio:	Covered, Patio, Patio Open, Front Porch, Porch
Entry Level:		1
✓	Laundry:	Gas Dryer Hookup, Individual Room, Washer Hookup
✓	Room Type:	Family Room, Living Room, Separate Family Room, Walk-in Closet, Kitchen, Laundry, Workshop, Main Floor Bedroom, All Bedrooms Down, Bonus Room, Main Floor Primary Bedroom
✓	Flooring:	Laminate
✓	Entry Location:	Front Door
✓	Spa Construction:	Heated, In Ground, Association, Gunite
✓	Property Condition:	Turnkey
✓	Interior Features:	High Ceilings, Open Floorplan, Pantry, Recessed Lighting, Ceiling Fan(s), Living Room Deck Attached, Storage
Main Level Bathrooms:		2
Main Level Bedrooms:		2
✓	Heating System:	Central
✓	Cooling System:	Central Air
✓	Utilities:	Sewer Connected, Water Connected, Cable Available, Electricity Connected, Natural Gas Connected, Phone Available
✓	Water Source:	

		Public
✓	Sewer:	Public Sewer
✓	Appliances:	Dishwasher, Disposal, Built-in Range, Gas Water Heater, Refrigerator, Gas Cooktop
✓	Accessibility Features:	Doors - Swing In, Parking

MLS Addon

Association Fee Frequency:	Monthly
Parcel Number:	459252012
Lot Size Square Feet:	4,792 Sqft
TaxAnnualAmount:	\$0
Association Fee:	\$135
✓ RoomKitchenFeatures:	Kitchen Open To Family Room
✓ RoomBathroomFeatures:	Shower, Bathtub, Separate Tub And Shower, Soaking Tub, Walk-in Shower, Exhaust Fan(s), Shower In Tub, Double Sinks In Primary Bath
High School:	Arlington
High School 2:	Arling
Middle Or Junior School:	Miller
High School District:	Hemet Unified
Levels:	One
✓ EatingArea:	Dining Room, Breakfast Counter / Bar, Family Kitchen
Taxes:	\$0
✓ OtherStructures:	Storage, Workshop,

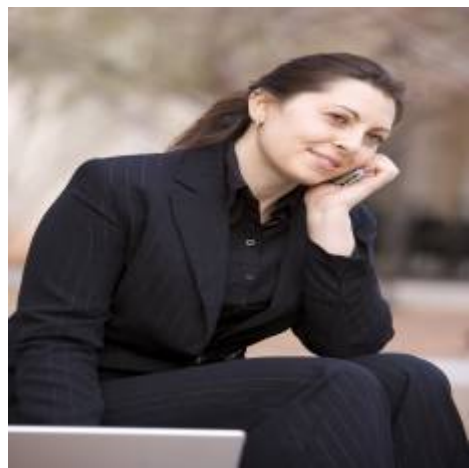
Outbuilding

Guest House
SqFt: **0 Sqft**

Approx Lot SqFt: **0 Sqft**

☒ Special Listing
Conditions: [Standard](#)

Agent [Info](#)



Rina Maya
 858-876-7946
 800-878-0907
 Questions@unitedbrokersinc.net

-
