

Residential Rent For Rent

1,362 Sqft - 5904 BottlebrushDrive, Orange,
California, 92869



Basic Details

Status: **Active**

Listing Type: **For Rent**

Property Type: **Residential Rent**

Property SubType: **Single Family Residence**

Price: **\$4,200**

Price Per Square Foot: **\$3**

Square Footage: **1,362 Sqft**

Lot Area: **0.38 Sqft**

Year Built: **1997**

View: **Mountain(s)**

Bedrooms: **3**

Bathrooms: **3**

Bathrooms (Full): **2**

Bathrooms (1/2): **1**

Country: **US**

State: **California**

County: **Orange**

City: **Orange**

Features

✓ View: **Neighborhood, Hills, Canyon**

Association: **1**

Senior Community: **0**

✓ Common Walls: **No Common Walls, End Unit**

Stories: **2**

✓ Pet Policy: **Size limit, Number limit**

✓ Community Features: **Sidewalks, Curbs**

✓ Pool: **In ground, Association, Community**

✓ Amenities: **Pool**

AttachedGarage : **1**

✓ Parking: **2.00**

✓ Parking: **Driveway, Direct Garage Access, Paved, Garage - Single Door, Garage Faces Front**

✓ Fireplace: **Gas, Living room**

✓ Lot Features: **Front Yard, Paved, Corner Lot, Garden,**

Zipcode:	92869			Desert Front
Listing ID:	OC25161116	✓	Fence:	Excellent condition, Vinyl, Split rail
		✓	Security:	Carbon monoxide detector(s), Smoke Detector(s)
		✓	Patio:	Patio, Front Porch, Rear Porch, Porch, Wrap Around
		✓	Furnished:	Unfurnished
		✓	Electric:	Electricity - On Property, Standard
		✓	Inclusions:	Washer, Disposal
Entry Level:		1		
		✓	Laundry:	Washer Hookup, Gas & Electric Dryer Hookup, Upper Level, Dryer Included, Washer Included, In Closet
		✓	Room Type:	Living Room, Walk-in Closet, Kitchen, Laundry, All Bedrooms Up, Primary Bathroom
		✓	Roofing:	Tile
		✓	Flooring:	Laminate
		✓	Entry Location	
		✓	Property Condition:	Updated/remodeled
		✓	Exterior Features:	Lighting
		✓	Interior Features:	Built-in Features, High Ceilings, Open Floorplan, Quartz Counters
Main Level		1		
Bathrooms:				
		✓	Heating System:	Central, natural gas, Fireplace(s)
		✓	Cooling System:	Dual, Gas, Central Air
		✓	Utilities:	Sewer Connected, Water Connected, Electricity Connected, Natural Gas

		Connected
✓	Water Source:	Public
✓	Sewer:	Public Sewer
✓	Appliances:	Dishwasher, Disposal, Gas & Electric Range, Refrigerator, Ice Maker, Free-standing Range, Freezer
✓	Accessibility Features:	Doors - Swing In, Parking

MLS Addon

Association Fee Frequency:	Monthly
Parcel Number:	93974221
Lot Size Square Feet:	16,476
TaxAnnualAmount:	\$0
✓ RoomKitchenFeatures:	Quartz Counters, Remodeled Kitchen, Self-closing Drawers, Built-in Trash/recycling
✓ RoomBathroomFeatures:	Shower, Bathtub, Soaking Tub, Walk-in Shower, Remodeled, Upgraded, Shower In Tub, Quartz Counters, Double Sinks In Primary Bath
Garage Spaces:	2
High School:	El Modena
High School 2:	Elmod2
Middle Or Junior School:	Miller
Elementary School:	Linda Vista
High School District:	Orange Unified
Levels:	Two
✓ EatingArea:	Dining Room, In Living

Room

Lease Term : **12 Months**

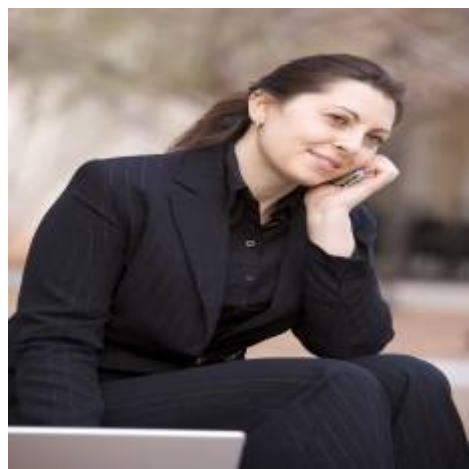
Taxes: **\$0**

Guest House
SqFt: **0**

Approx Lot SqFt: **0**

✓ Special Listing
Conditions: **Standard**

Agent [Info](#)



Rina Maya
☎ 858-876-7946
☎ 800-878-0907
✉ Questions@unitedbrokersinc.net