

Residential For Sale

1,770 Sqft - 24 Zinfandel, Rancho Mirage,
California, 92270



Basic Details

Status: **Active**

Listing Type: **For Sale**

Property Type: **Residential**

Property SubType: **Single Family Residence**

Price: **\$749,500**

Price Per Square Foot: **\$423**

Square Footage: **1,770 Sqft**

Lot Area: **0.13 Sqft**

Year Built: **2023**

View: **Mountain(s)**

Bedrooms: **2**

Bathrooms: **2**

Bathrooms (Full): **1**

Bathrooms (3/4): **1**

Country: **US**

State: **California**

County: **Riverside**

City: **Rancho Mirage**

Zipcode: **92270**

Features

✓ View: **Mountain(s), Panoramic, Desert, Courtyard**

Association: **1**

Senior Community: **0**

✓ Common Walls: **No Common Walls**

Stories: **1**

✓ Pool: **Heated, In ground, Community, Lap**

✓ Amenities: **Pool, Tennis Court(s), Clubhouse, Meeting Room, Fire Pit, Bocce Ball Court, Card Room, Billiard Room, Recreation Room, Pet Rules, Hiking Trails, Security**

AttachedGarage: **1**

✓ Parking: **0.00**

✓ Parking: **Garage Door Opener, Garage - Two Door, Guest, Concrete**

Spa: **1**

✓ Lot Features: **Back Yard, Lawn**

✓ Fence: **Block**

Listing ID:	25573053PS	✓	Security:	Automatic gate, Fire and smoke detection system, Gated with guard, 24 hour security, Fire Sprinkler System
		✓	Patio:	Covered, Concrete
		✓	Inclusions:	Washer/dryer, Refrigerator, Dishwasher, Stove
		✓	Laundry:	Individual Room, Dryer Included, Washer Included
		✓	Room Type:	Living Room, Walk-in Closet, Great Room
		✓	Flooring:	Tile
		✓	Window Features:	Plantation Shutters, Screens
		✓	Spa Construction:	Heated, Association
		✓	Foundation Details:	Slab
		✓	Interior Features:	High Ceilings, Open Floorplan, Recessed Lighting
		✓	Heating System:	Central, Forced air
		✓	Cooling System:	Central Air
		✓	Sewer:	Sewer Paid
		✓	Appliances:	Dishwasher, Disposal, Electric Oven, Microwave, Refrigerator, Self Cleaning Oven, Gas Cooktop, Range Hood, Vented Exhaust Fan
		✓	Accessibility Features:	Doors - Swing In, 32 Inch Or More Wide Doors

MLS [Addon](#)

Association Fee Frequency:	Monthly
Parcel Number:	685400017
Lot Size Square	5,502 Sqft

Feet:

TaxAnnualAmount:	\$0
------------------	-----

Association Fee:	\$445
------------------	-------

✓ RoomKitchenFeatures:	Walk-in Pantry
✓ RoomBathroomFeatures:	Shower, Shower In Tub, Vanity Area, Low Flow Shower, Low Flow Toilet(s), Tile Counters

Garage Spaces:	2
----------------	---

High School:	Arlington
--------------	-----------

High School 2:	Arling
----------------	--------

Middle Or Junior School:	Miller
--------------------------	--------

Levels:	One
---------	-----

✓ EatingArea:	Dining Room
---------------	-------------

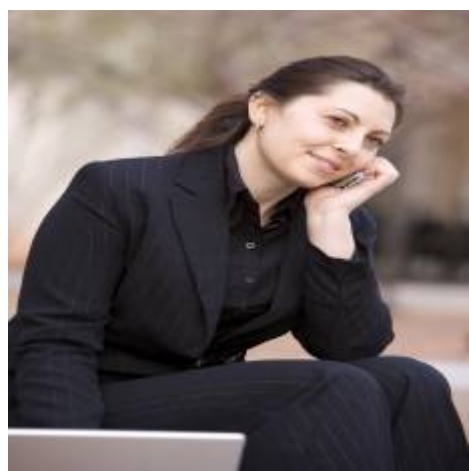
Taxes:	\$0
--------	-----

Guest House SqFt:	0 Sqft
-------------------	--------

Approx Lot SqFt:	0 Sqft
------------------	--------

✓ Special Listing Conditions:	Standard
-------------------------------	----------

Agent [Info](#)



Rina Maya
☎ 858-876-7946
☎ 800-878-0907
✉ Questions@unitedbrokersinc.net