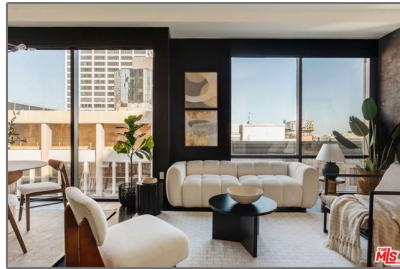


# Residential For Sale

640 Sqft - 655 HopeStreet, Los Angeles,  
California, 90017



## Basic Details

Status:	Active
Listing Type:	For Sale
Property Type:	Residential
Property SubType:	Condominium
Price:	\$505,000
Price Per Square Foot:	\$789
Square Footage:	640 Sqft
Lot Area:	0.27 Sqft
Year Built:	1964
View:	Mountain(s)
Bedrooms:	1
Bathrooms:	1
Bathrooms (Full):	1
Country:	US
State:	California
County:	Los Angeles
City:	Los Angeles
Zipcode:	90017
Listing ID:	25574969

## Features

✓ View:	City Lights
Association:	1
Senior Community:	0
✓ Common Walls:	1 Common Wall
Stories:	17
✓ Amenities:	Clubhouse, Controlled Access, Concierge
✓ Parking	
✓ Parking:	Garage, Controlled Entrance
✓ Security:	Card/code access, 24 hour security
Entry Level:	14
✓ Laundry:	Washer Included
✓ Room Type:	Living Room, Loft
✓ Flooring:	Wood
✓ Heating System:	electric
✓ Appliances:	Dishwasher, Disposal, Microwave, Refrigerator

MLS [Addon](#)

Association Fee Frequency:	Monthly
Zoning:	LAC2
Parcel Number:	5144006085
Lot Size Square Feet:	11,677 Sqft
TaxAnnualAmount:	\$0
Association Fee:	\$1,131
High School:	Arlington
High School 2:	Arling
Middle Or Junior School:	Miller
Levels:	One
Taxes:	\$0
Guest House SqFt:	0 Sqft
Approx Lot SqFt:	0 Sqft
<input checked="" type="checkbox"/> Special Listing Conditions:	<a href="#">Standard</a>

Virtual Tour [Click Here](#)  
URL Unbranded:

Agent [Info](#)



Rina Maya  
☎ 858-876-7946  
☎ 800-878-0907  
✉ [Questions@unitedbrokersinc.net](mailto:Questions@unitedbrokersinc.net)

---