

Residential For Sale

1,064 Sqft - 42720 KansasStreet, Palm Desert,
California, 92211



Basic Details

Status:	Active
Listing Type:	For Sale
Property Type:	Residential
Property SubType:	Single Family Residence
Price:	\$414,000
Price Per Square Foot:	\$389
Square Footage:	1,064 Sqft
Lot Area:	0.16 Sqft
Year Built:	1961
View:	Mountain(s)
Bedrooms:	2
Bathrooms:	2
Bathrooms (Full):	2
Country:	US
State:	California
County:	Riverside
City:	Palm Desert
Zipcode:	92211
Listing ID:	219133695DA

Features

✓	View:	Mountain(s)
Association:		1
Senior Community:		0
Stories:		1
✓	Community Features:	Golf
✓	Pool:	In ground, Community
✓	Amenities:	Other, Golf Course
AttachedGarage :		1
✓	Parking:	3.00
✓	Parking:	Driveway, Garage Door Opener
Spa:		0
✓	Lot Features:	Front Yard, Sprinkler System
✓	Fence:	Wood, Brick
✓	Patio:	Covered
✓	Room Type:	Great Room
✓	Roofing:	Shingle

✓	Flooring:	Carpet, Tile
✓	Spa Construction:	Community, In Ground
✓	Interior Features:	Open Floorplan, Recessed Lighting
✓	Heating System:	Central, Forced air
✓	Cooling System:	Central Air
✓	Appliances:	Dishwasher, Disposal, Gas Range, Refrigerator, Tankless Water Heater, Vented Exhaust Fan

MLS [Addon](#)

Association Fee Frequency:	Monthly
Parcel Number:	637122009
Lot Size Square Feet:	6,970
✓ Exclusions:	Living Room Tapestry
TaxAnnualAmount:	\$0
Association Fee:	\$33
✓ RoomKitchenFeatures:	Kitchen Island, Remodeled Kitchen, Stone Counters
✓ RoomBathroomFeatures:	Shower In Tub
Garage Spaces:	1
High School:	Arlington
High School 2:	Arling
Middle Or Junior School:	Miller
Levels:	One
✓ EatingArea:	In Living Room
Taxes:	\$0
Guest House SqFt:	0

Approx Lot SqFt: 0

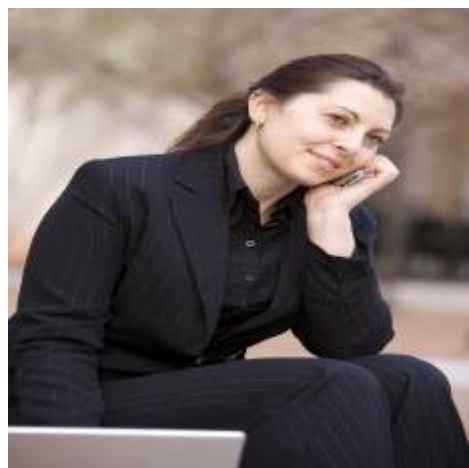
✓

Special Listing
Conditions:

Standard

Virtual Tour [Click Here](#)
URL Unbranded:

Agent [Info](#)



Rina Maya
☎ 858-876-7946
☎ 800-878-0907
✉ Questions@unitedbrokersinc.net

-
