

# Manufactured In Park For Sale

- 747 Lewelling Blvd, San Leandro, California, 94579



## Basic [Details](#)

Status:	<b>Active</b>
Listing Type:	<b>For Sale</b>
Property Type:	<b>Manufactured In Park</b>
Price:	<b>\$125,000</b>
Price Per Square Foot:	<b>\$237</b>
Lot Area:	<b>0.01 Sqft</b>
View:	<b>Mountain(s)</b>
Bedrooms:	<b>1</b>
Bathrooms:	<b>1</b>
Bathrooms (Full):	<b>1</b>
State:	<b>California</b>
County:	<b>Alameda</b>
City:	<b>San Leandro</b>
Zipcode:	<b>94579</b>
Listing ID:	<b>41107680</b>

## MLS [Addon](#)

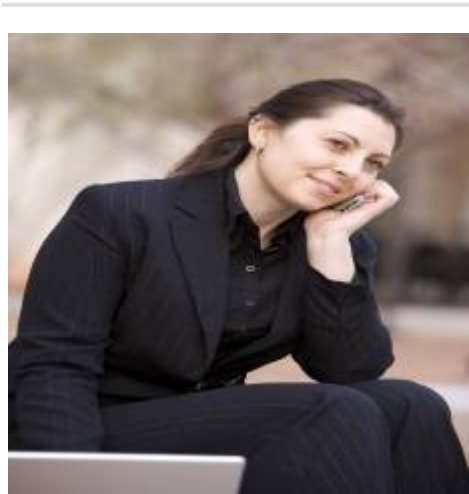
Zoning: **LCA11\***




## Features

✓	Common Walls:	<a href="#">No Common Walls</a>
✓	Pet Policy:	<a href="#">Number limit, Yes</a>
✓	Parking	
✓	Parking:	<a href="#">Carport</a>
✓	Lot Features:	<a href="#">Back Yard</a>
✓	Flooring:	<a href="#">Laminate</a>
Main Level		<b>2</b>
Bathrooms:		
Main Level		<b>3</b>
Bedrooms:		
✓	Heating System:	<a href="#">Forced air</a>
✓	Water Source:	<a href="#">Other</a>
✓	Sewer:	<a href="#">Other</a>

Parcel Number:	<b>80G90028</b>
Lot Size Square Feet:	<b>528 Sqft</b>
TaxAnnualAmount:	<b>\$0</b>
Garage Spaces:	<b>1</b>
High School:	<b>Arlington</b>
High School 2:	<b>Arling</b>
Middle Or Junior School:	<b>Miller</b>
Taxes:	<b>\$0</b>
Guest House SqFt:	<b>0 Sqft</b>
Approx Lot SqFt:	<b>0 Sqft</b>

Agent [Info](#)



Rina Maya  
 858-876-7946  
 800-878-0907  
 [Questions@unitedbrokersinc.net](mailto:Questions@unitedbrokersinc.net)