

# Residential For Sale

1,579 Sqft - 1121 E Elm St, Brea, California,  
92821



## Basic Details

Status: **Active**

Listing Type: **For Sale**

Property Type: **Residential**

Property SubType: **Single Family Residence**

Price: **\$1,250,000**

Price Per Square Foot: **\$792**

Square Footage: **1,579 Sqft**

Lot Area: **0.22 Sqft**

Year Built: **1961**

View: **Mountain(s)**

Bedrooms: **4**

Bathrooms: **2**

Bathrooms (Full): **2**

Country: **US**

State: **California**

County: **Orange**

City: **Brea**

Zipcode: **92821**

Listing ID: **PW25176461**

## Features

✓ View: **Mountain(s), Neighborhood, Hills**

Association: **0**

Senior Community: **0**

✓ Common Walls: **No Common Walls**

Stories: **1**

✓ Community Features: **Sidewalks, Street Lights, Suburban, Park, Lake**

AttachedGarage : **0**

✓ Parking: **2.00**

✓ Parking: **Driveway, Garage, Concrete, Rv Potential, Oversized**

✓ Fireplace: **Living room, Gas starter**

✓ Lot Features: **Back Yard, Front Yard, Park Nearby, Sprinkler System, Landscaped, Sprinklers Drip System, Lawn, Sprinklers Timer**

✓ Fence: **Wood**

✓ Inclusions: **Stainless Refrigerator**

Entry Level: **1**

✓	Laundry:	Gas Dryer Hookup, Inside, Washer Hookup, Stackable, Dryer Included, Washer Included, See Remarks, In Closet
✓	Room Type:	Living Room, Kitchen, Laundry, All Bedrooms Down, See Remarks, Bonus Room, Main Floor Primary Bedroom, Primary Suite, Primary Bathroom, Primary Bedroom
✓	Roofing:	Composition, Shingle, See remarks
✓	Window Features:	Double Pane Windows
✓	Entry Location:	Front
✓	Property Condition:	Turnkey, Updated/remodeled
✓	Foundation Details:	Raised
✓	Exterior Features:	Rain Gutters
✓	Interior Features:	High Ceilings, Open Floorplan, Recessed Lighting, Quartz Counters

Main Level Bathrooms:	<b>2</b>
--------------------------	----------

Main Level Bedrooms:	<b>4</b>
-------------------------	----------

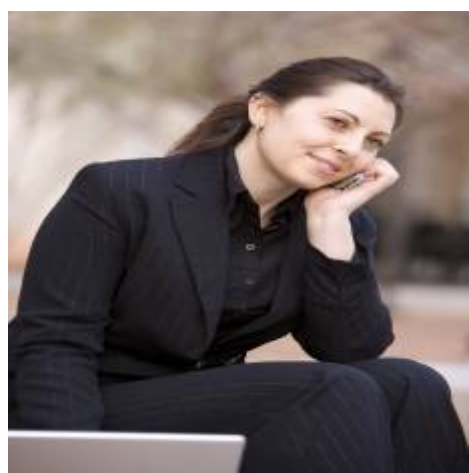
✓	Heating System:	Central
✓	Cooling System:	Central Air
✓	Water Source:	Public
✓	Sewer:	Public Sewer
✓	Appliances:	Dishwasher, 6 Burner Stove, Gas Range, Refrigerator, Tankless Water Heater, Range Hood, Water Line To Refrigerator

MLS [Addon](#)

Parcel Number:	<b>28418125</b>
Lot Size Square Feet:	<b>9,450</b>
TaxAnnualAmount:	<b>\$0</b>
Garage Spaces:	<b>2</b>
High School:	<b>Arlington</b>
High School 2:	<b>Arling</b>
Middle Or Junior School:	<b>Miller</b>
High School District:	<b>Brea-Olinda Unified</b>
Levels:	<b>One</b>
Taxes:	<b>\$0</b>
Guest House SqFt:	<b>0</b>
Approx Lot SqFt:	<b>0</b>
<input checked="" type="checkbox"/> Special Listing Conditions:	<a href="#">Standard, Trust</a>

Virtual Tour URL Unbranded:	<a href="#">Click Here</a>
-----------------------------	----------------------------

Agent [Info](#)



Rina Maya  
 858-876-7946  
 800-878-0907  
 [Questions@unitedbrokersinc.net](mailto:Questions@unitedbrokersinc.net)