

Residential For Sale

2,820 Sqft - 33802 EdgeLane, Temecula,
California, 92592



Basic Details

Status: **Active**

Listing Type: **For Sale**

Property Type: **Residential**

Property SubType: **Single Family Residence**

Price: **\$1,100,000**

Price Per Square Foot: **\$390**

Square Footage: **2,820 Sqft**

Lot Area: **0.21 Sqft**

Year Built: **2019**

View: **Mountain(s)**

Bedrooms: **3**

Bathrooms: **4**

Features

✓ View: **Mountain(s), Neighborhood, Valley**

Association: **1**

Senior Community: **0**

✓ Common Walls: **No Common Walls**

Stories: **1**

✓ Community Features: **Sidewalks, Street Lights, Suburban**

✓ Amenities: **Maintenance Grounds**

AttachedGarage: **1**

:

✓ Parking: **6.00**

✓ Parking: **Driveway, Direct Garage Access**

Bathrooms (Full):	3
State:	California
County:	Riverside
City:	Temecula
Zipcode:	92592
Listing ID:	NDP2507761

Spa:	0
✓ Fireplace:	Great room
✓ Lot Features:	Back Yard, 0-1 Unit/acre
✓ Fence:	Vinyl
Entry Level:	1
✓ Laundry:	Individual Room
✓ Room Type:	Office, Kitchen, Laundry, Great Room, Main Floor Bedroom, Game Room, Foyer, Main Floor Primary Bedroom
✓ Entry Location:	Ground Level
Main Level Bathrooms:	4
Main Level Bedrooms:	3
✓ Cooling System:	Central Air
✓ Sewer:	Public Sewer

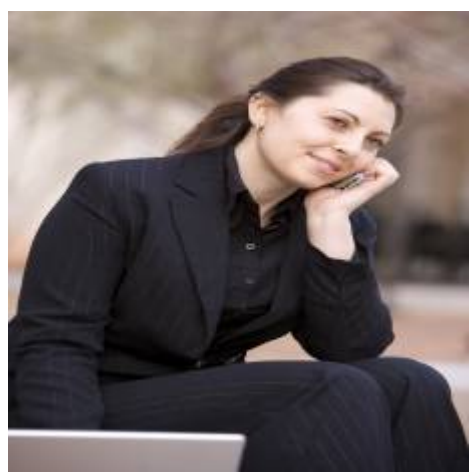
MLS [Addon](#)

Association Fee Frequency:	Monthly
Zoning:	R1
Parcel Number:	917400014
Lot Size Square Feet:	9,147 Sqft
✓ Exclusions:	Master Bedroom Bed And The Two Nightstands And Tvs
TaxAnnualAmount:	\$0
Association Fee:	\$76
Garage Spaces:	3
High School:	Great Oak
High School 2:	Greoak2

Middle Or Junior School:	Vail Ranch
Elementary School:	Tony Tobin
High School District:	Temecula Unified
Levels:	One
Taxes:	\$0
Guest House SqFt:	0 Sqft
Approx Lot SqFt:	0 Sqft
<div>✓</div> Special Listing Conditions:	Trust

Virtual Tour [Click Here](#)
URL Unbranded:

Agent [Info](#)



Rina Maya
☎ 858-876-7946
☎ 800-878-0907
✉ Questions@unitedbrokersinc.net

-