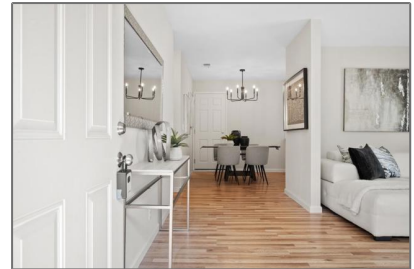


Residential For Sale

840 Sqft - 2768 Kilconway Lane, South San Francisco, California, 94080



Basic Details

Status:	Active
Listing Type:	For Sale
Property Type:	Residential
Property SubType:	Condominium
Price:	\$750,000
Price Per Square Foot:	\$893
Square Footage:	840 Sqft
Year Built:	1973
View:	Mountain(s)
Bedrooms:	2
Bathrooms:	1
Bathrooms (Full):	1
State:	California
County:	San Mateo
City:	South San Francisco
Zipcode:	94080
Listing ID:	ML82017568

Features

✓ View:	City Lights, Mountain(s), Park/greenbelt
Association:	1
Stories:	1
AttachedGarage :	1
✓ Parking	
✓ Parking:	Gated, Off Street
✓ Lot Features:	Level
✓ Roofing:	Tar/gravel
✓ Flooring:	Carpet
✓ Foundation Details:	Slab
✓ Water Source:	Public
✓ Sewer:	Private Sewer
✓ Appliances:	Dishwasher, Microwave, Refrigerator

MLS Addon

Association Fee Frequency: **Monthly**

Zoning: **RM00PC**

Parcel Number: **100431010**

TaxAnnualAmount: **\$0**

Association Fee: **\$450**

✓ RoomKitchenFeatures: **Quartz Counters**

Garage Spaces: **1**

High School: **Arlington**

High School 2: **Arling**

Middle Or Junior School: **Miller**

High School District: **South San Francisco Unified**

Taxes: **\$0**

Guest House SqFt: **0**

Approx Lot SqFt: **0**

✓ Special Listing Conditions: **Standard**

Agent Info



Rina Maya

☎ 858-876-7946

☎ 800-878-0907

✉ Questions@unitedbrokersinc.net

