

# Residential For Sale

1,200 Sqft - 15953 La VeridaDrive, Victorville,  
California, 92395



## Basic Details

|                        |                         |
|------------------------|-------------------------|
| Status:                | Active                  |
| Listing Type:          | For Sale                |
| Property Type:         | Residential             |
| Property SubType:      | Single Family Residence |
| Price:                 | \$355,000               |
| Price Per Square Foot: | \$296                   |
| Square Footage:        | 1,200 Sqft              |
| Lot Area:              | 0.18 Sqft               |
| Year Built:            | 1978                    |
| View:                  | Mountain(s)             |
| Bedrooms:              | 3                       |
| Bathrooms:             | 2                       |
| Bathrooms (Full):      | 2                       |
| Country:               | US                      |
| State:                 | California              |
| County:                | San Bernardino          |
| City:                  | Victorville             |
| Zipcode:               | 92395                   |
| Listing ID:            | CV25176250              |

## Features

|                       |  |
|-----------------------|--|
| ✓ View:               | Mountain(s)  |
| Association:          | 0  |
| Senior Community:     | 0  |
| ✓ Common Walls:       | No Common Walls  |
| Stories:              | 1  |
| ✓ Community Features: | Sidewalks, Street Lights, Curbs, Gutters   |
| AttachedGarage :      | 1  |
| ✓ Parking:            | 5.00   |
| ✓ Parking:            | Direct Garage Access, Paved, Garage, Uncovered, Private, Street, Rv Access/parking |
| Spa:                  | 0  |
| ✓ Lot Features:       | Lot 6500-9999  |
| ✓ Fence:              | Wood, Chain link   |
| ✓ Security:           | Carbon monoxide detector(s), Smoke Detector(s)                                     |
| ✓ Patio:              | Covered  |
| ✓ Electric:           | Standard   |

|              |                     |   |
|--------------|---------------------|---|
| Entry Level: |                     | 1                                       |
| ✓            | Laundry:            | In Garage                               |
| ✓            | Room Type:          | Living Room, Kitchen, All Bedrooms Down |
| ✓            | Roofing:            | Shingle                                 |
| ✓            | Flooring:           | Wood, Laminate                          |
| ✓            | Window Features:    | Double Pane Windows                     |
| ✓            | Entry Location:     | Front                                   |
| ✓            | Property Condition: | Turnkey                                 |
| ✓            | Foundation Details: | Slab                                    |
| ✓            | Interior Features:  | Open Floorplan, Ceramic Counters        |

|                       |  |   |
|-----------------------|--|---|
| Main Level Bathrooms: |  | 2 |
|-----------------------|--|---|

|                      |                         |   |
|----------------------|-------------------------|---|
| Main Level Bedrooms: |                         | 3   |
| ✓                    | Heating System:         | Central   |
| ✓                    | Cooling System:         | Central Air   |
| ✓                    | Utilities:              | Sewer Connected, Electricity Connected, Natural Gas Connected |
| ✓                    | Water Source:           | Public  |
| ✓                    | Sewer:                  | Public Sewer  |
| ✓                    | Appliances:             | Dishwasher, Gas Range, Gas Water Heater, Water Heater         |
| ✓                    | Accessibility Features: | 2+ Access Exits   |

MLS [Addon](#)

|                 |               |
|-----------------|---------------|
| Zoning:         | 93/6          |
| Parcel Number:  | 0478281070000 |
| Lot Size Square | 7,700 Sqft    |

Feet:

|   |             |                                     |
|---|-------------|-------------------------------------|
| ✓ | Exclusions: | Window Ac Units, Soft Water System. |
|---|-------------|-------------------------------------|

TaxAnnualAmount: \$0

|   |                       |                |
|---|-----------------------|----------------|
| ✓ | RoomKitchenFeatures:  | Stone Counters |
| ✓ | RoomBathroomFeatures: | Shower In Tub  |

Garage Spaces: 1

High School: Arlington

High School 2: Arling

Middle Or Junior School: Miller

High School District: Victor Valley Unified

Levels: One

|   |             |                |
|---|-------------|----------------|
| ✓ | EatingArea: | In Living Room |
|---|-------------|----------------|

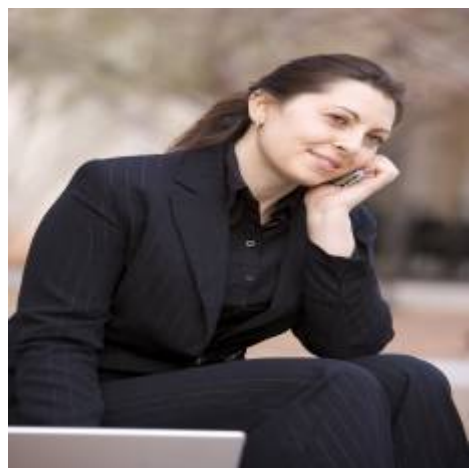
Taxes: \$0

Guest House SqFt: 0 Sqft

Approx Lot SqFt: 0 Sqft

|   |                             |          |
|---|-----------------------------|----------|
| ✓ | Special Listing Conditions: | Standard |
|---|-----------------------------|----------|

Agent [Info](#)



Rina Maya  
☎ 858-876-7946  
☎ 800-878-0907  
✉ [Questions@unitedbrokersinc.net](mailto:Questions@unitedbrokersinc.net)

---