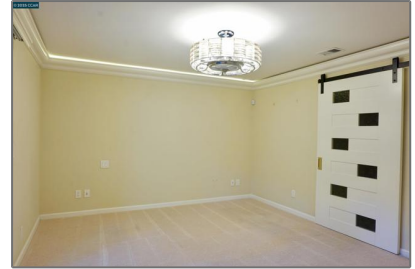


# Residential For Sale

1,628 Sqft - 190 Cleaveland Rd, Pleasant Hill,  
California, 94523



## Basic Details

Status:	Active
Listing Type:	For Sale
Property Type:	Residential
Property SubType:	Condominium
Price:	\$649,900
Price Per Square Foot:	\$399
Square Footage:	1,628 Sqft
Year Built:	1980
View:	Mountain(s)
Bedrooms:	3
Bathrooms:	2
Bathrooms (Full):	2
State:	California
County:	Contra Costa
City:	Pleasant Hill
Zipcode:	94523
Listing ID:	41107742

## Features

Association:	1
✓ Amenities:	Maintenance Grounds, Trash, Insurance
AttachedGarage :	1
✓ Parking:	2.00
✓ Parking:	Garage Door Opener, Garage
✓ Fireplace:	Living room
✓ Lot Features:	Level With Street
✓ Patio:	Deck
✓ Laundry:	Dryer Included, Washer Included
✓ Room Type:	Family Room, Kitchen
✓ Roofing:	Tile
✓ Flooring:	Wood, Carpet, Tile
✓ Heating System:	Forced air
✓ Cooling System:	Central Air

MLS [Addon](#)

Association Fee Frequency:	Monthly
Parcel Number:	1493600124
TaxAnnualAmount:	\$0
Association Fee:	\$600
✓ RoomKitchenFeatures:	Kitchen Island, Remodeled Kitchen
✓ RoomBathroomFeatures:	Upgraded, Shower In Tub
Garage Spaces:	2
High School:	Arlington
High School 2:	Arling
Middle Or Junior School:	Miller
High School District:	Mount Diablo
Levels:	Two
✓ EatingArea:	In Kitchen, Breakfast Nook
Taxes:	\$0
Guest House SqFt:	0 Sqft
Approx Lot SqFt:	0 Sqft

Agent [Info](#)



Rina Maya  
☎ 858-876-7946  
☎ 800-878-0907  
✉ [Questions@unitedbrokersinc.net](mailto:Questions@unitedbrokersinc.net)

