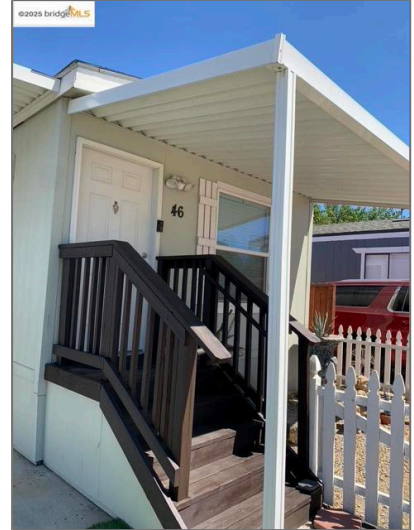


# Manufactured In Park For Sale

- 24221 Chrisman, Tracy, California, 95304



## Basic Details

Status: **Active**

Listing Type: **For Sale**

Property Type: **Manufactured In Park**

Price: **\$154,000**

Price Per Square Foot: **\$193**

Lot Area: **0.02 Sqft**

View: **Mountain(s)**

Bedrooms: **2**

Bathrooms: **2**

Bathrooms (Full): **2**

Country: **US**

State: **California**

County: **San Joaquin**

City: **Tracy**

## Features

✓ Pet Policy

✓ Parking: **3.00**

✓ Parking: **Carport**

✓ Lot Features: **Front Yard, Level With Street**

✓ Flooring: **Carpet, Vinyl**

✓ Water Source: **Shared Well**

Zipcode:	<b>95304</b>
Listing ID:	<b>41107335</b>

MLS [Addon](#)

Zoning:	<b>VA</b>
Parcel Number:	<b>910025030000</b>
Lot Size Square Feet:	<b>800 Sqft</b>
TaxAnnualAmount:	<b>\$0</b>
High School:	<b>Arlington</b>
High School 2:	<b>Arling</b>
Middle Or Junior School:	<b>Miller</b>
Taxes:	<b>\$0</b>
Guest House SqFt:	<b>0 Sqft</b>
Approx Lot SqFt:	<b>0 Sqft</b>

Agent [Info](#)



Rina Maya  
☎ 858-876-7946  
☎ 800-878-0907  
✉ [Questions@unitedbrokersinc.net](mailto:Questions@unitedbrokersinc.net)