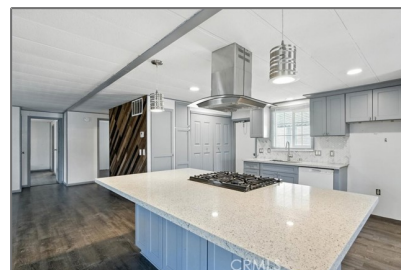


Manufactured In Park For Sale

1,152 Sqft - 20843 WaalewRoad, Apple Valley, California, 92307



Basic Details

Status: **Active**

Listing Type: **For Sale**

Property Type: **Manufactured In Park**

Price: **\$104,999**

Price Per Square Foot: **\$91**

Square Footage: **1,152 Sqft**

Year Built: **1976**

View: **Mountain(s)**

Bedrooms: **2**

Bathrooms: **2**

Bathrooms (Full): **2**

Country: **US**

State: **California**

County: **San Bernardino**

City: **Apple Valley**

Zipcode: **92307**

Listing ID: **IG25181450**

Features

Association: **0**

Senior Community: **0**

Stories: **1**

✓ Community Features: **Suburban**

AttachedGarage : **0**

✓ Parking: **2.00**

✓ Parking: **Carport**

✓ Lot Features: **0-1 Unit/acre**

✓ Patio: **Patio, Porch**

Entry Level: **1**

✓ Laundry: **Washer Hookup**

✓ Roofing: **Composition, Shingle**

✓ Entry Location: **Ground Level - No Steps**

✓ Heating System: **Central**

✓ Cooling System: **Central Air**

✓ Water Source: **Public**



Sewer:

Public Sewer

MLS [Addon](#)

Parcel Number: **0441011596164**

TaxAnnualAmount: **\$0**

Garage Spaces: **2**

High School: **Arlington**

High School 2: **Arling**

Middle Or Junior School: **Miller**

High School District: **Apple Valley Unified**

Levels: **One**

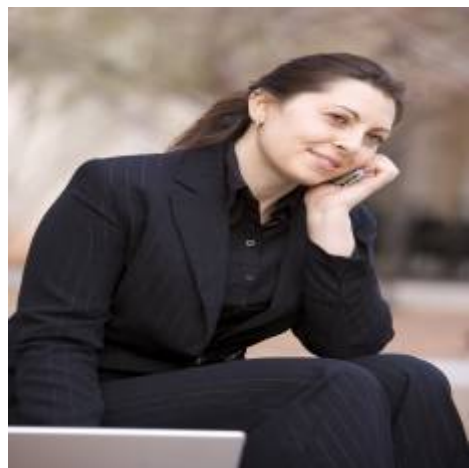
Taxes: **\$0**

Guest House SqFt: **0**

Approx Lot SqFt: **0**

☒ Special Listing Conditions: [Standard](#)

Agent [Info](#)



Rina Maya
 858-876-7946
 800-878-0907
 Questions@unitedbrokersinc.net