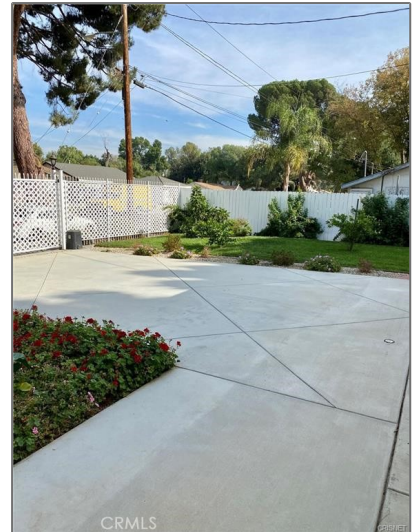


Residential Rent For Rent

2,500 Sqft - 19238 Arminta, Reseda, California, 91335



Basic Details

Status:	Active
Listing Type:	For Rent
Property Type:	Residential Rent
Property SubType:	Single Family Residence
Price:	\$6,000
Price Per Square Foot:	\$2
Square Footage:	2,500 Sqft
Lot Area:	0.21 Sqft
Year Built:	2018
View:	Mountain(s)
Bedrooms:	5
Bathrooms:	3
Bathrooms (Full):	3
Country:	US
State:	California

Features

Association:	0
Senior Community:	0
✓ Common Walls:	No Common Walls
Stories:	1
✓ Pet Policy:	Call
✓ Community Features:	Curbs
✓ Parking:	4.00
✓ Parking:	Gated, Driveway, Auto Driveway Gate, Paved, See Remarks, Rv Potential
Spa:	0
✓ Lot Features:	Back Yard, Front Yard, Sprinkler System, Landscaped, Lot 6500-9999, Yard, Lawn, Garden, Sprinklers Timer
✓ Fence:	See remarks, Excellent condition, Electric, Vinyl,

County:	Los Angeles				Privacy
City:	Reseda	✓	Security:		Automatic gate, Fire and smoke detection system, Carbon monoxide detector(s), Fire rated drywall, Smoke Detector(s)
Zipcode:	91335				
Listing ID:	SR25138301				
		✓	Patio:		Covered, Patio, See Remarks, Patio Open, Concrete, Enclosed, Front Porch, Porch, Slab
		✓	Furnished:		Unfurnished
		✓	Electric:		Electricity - On Property, 220 Volts In Laundry, 220v Other - See Remarks
		✓	Inclusions:		Stove Top, Microwave, Pool Table, Owned Solar, Ge Cafe Built-in Stainless Steel Refrigerator. Washer And Dryer. Outdoor Room Screen.
			Entry Level:		1
		✓	Laundry:		Electric Dryer Hookup, Individual Room, Inside, Dryer Included, Washer Included
		✓	Room Type:		Family Room, Formal Entry, Living Room, Separate Family Room, Walk-in Closet, Kitchen, Laundry, Main Floor Bedroom, All Bedrooms Down, See Remarks, Entry, Utility Room, Center Hall, Foyer, Main Floor Primary Bedroom
		✓	Flooring:		Tile
		✓	Window Features:		Double Pane Windows, Screens, Blinds, Custom Covering, Casement Windows, Energy Star Qualified Windows
		✓	Entry Location:		Living
		✓	Property Condition:		Turnkey, Updated/remodeled, Building Permit

✓	Foundation Details:	Slab
✓	Exterior Features:	Lighting, Rain Gutters
✓	Interior Features:	Built-in Features, High Ceilings, Open Floorplan, Pantry, Recessed Lighting, Two Story Ceilings, Cathedral Ceiling(s), Ceiling Fan(s), Granite Counters, Copper Plumbing Full, Partially Furnished

Main Level **3**
Bathrooms:

Main Level **5**
Bedrooms:

✓	Heating System:	Central, Forced air, Zoned, electric, High efficiency, Energy Star Qualified Equipment
✓	Cooling System:	Electric, Zoned, High efficiency, Central Air, Energy Star Qualified Equipment
✓	Utilities:	Electricity Available, Sewer Connected, Water Available, Water Connected, Electricity Connected, See Remarks
✓	Water Source:	Public
✓	Sewer:	Public Sewer
✓	Appliances:	Dishwasher, Disposal, Built-in Range, Electric Oven, Energy Star Qualified Water Heater, Microwave, Refrigerator, Range Hood, High Efficiency Water Heater, Freezer, Electric Cooktop, Electric Range, Energy Star Qualified Appliances
✓	Accessibility Features:	Doors - Swing In, Parking, 2+ Access Exits, Customized Wheelchair Accessible, No Interior Steps, Grab Bars In Bathroom(s), 32 Inch Or More Wide Doors, See Remarks, Entry Slope

Less Than 1 Foot, Other,
Disability Features, 36
Inch Or More Wide Halls,
48 Inch Or More Wide
Halls, Lowered Light
Switches

MLS Addon

Parcel Number: **2104007001**

Lot Size Square Feet: **9,000 Sqft**

✓ Exclusions: **Negotiable**

TaxAnnualAmount: **\$0**

✓ RoomKitchenFeatures: **Granite Counters,
Kitchen Island, Pots &
Pan Drawers, Remodeled
Kitchen, Self-closing
Cabinet Doors, Kitchen
Open To Family Room,
Self-closing Drawers,
Built-in Trash/recycling**

✓ RoomBathroomFeatures: **Shower, Closet In
Bathroom, Walk-in
Shower, Exhaust Fan(s),
Granite Counters, Linen
Closet/storage,
Remodeled, Upgraded,
Double Sinks In Bath(s),
Dual Shower Heads (or
Multiple), Low Flow
Shower, Low Flow
Toilet(s), Main Floor Full
Bath**

High School: **Arlington**

High School 2: **Arling**

Middle Or Junior School: **Miller**

High School District: **Los Angeles Unified**

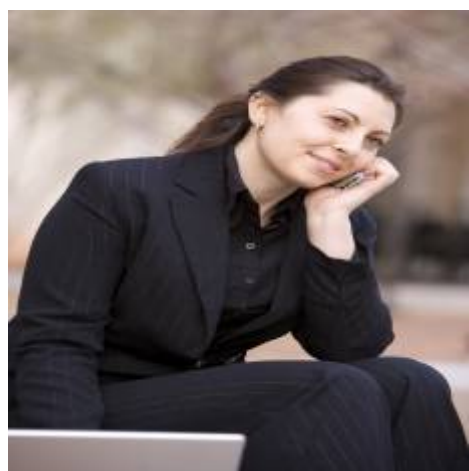
Levels: **One**

✓ EatingArea: **In Kitchen, Area,
Breakfast Counter / Bar,
Family Kitchen, See
Remarks**

Lease Term : **Negotiable**

Taxes:	\$0
✓ OtherStructures:	Gazebo
Guest House SqFt:	0 Sqft
Approx Lot SqFt:	0 Sqft
✓ Special Listing Conditions:	Standard

Agent [Info](#)



Rina Maya
☎ 858-876-7946
☎ 800-878-0907
✉ Questions@unitedbrokersinc.net

-