

Residential For Sale

4,083 Sqft - 1 Rue Du Parc, Newport Beach,
California, 92660



Basic Details

Status:	Active
Listing Type:	For Sale
Property Type:	Residential
Property SubType:	Single Family Residence
Price:	\$5,995,000
Price Per Square Foot:	\$1,468
Square Footage:	4,083 Sqft
Lot Area:	0.15 Sqft
Year Built:	1972
View:	Mountain(s)
Bedrooms:	5
Bathrooms:	5
Bathrooms (Full):	4
Bathrooms (1/2):	1
Country:	US
State:	California
County:	Orange
City:	Newport Beach
Zipcode:	92660

Features

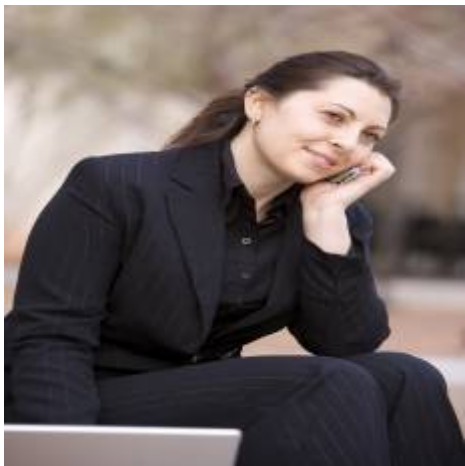
✓ View:	City Lights, Panoramic, Golf Course
Association:	1
Senior Community:	0
✓ Common Walls:	1 Common Wall, No One Above, No One Below
Stories:	2
✓ Community Features:	Curbs
✓ Pool:	In ground, Private
✓ Amenities:	Management, Guard, Maintenance Grounds, Controlled Access
AttachedGarage :	1
✓ Parking:	2.00
✓ Parking:	Direct Garage Access, Garage - Single Door, Garage, Garage Faces Front
Spa:	1
✓ Fireplace:	Living room, Bonus room
✓ Lot Features:	Back Yard, Landscaped, Corner Lot

Listing ID:	NP25181519	✓ Security:	Gated community, Gated With Attendant
		✓ Electric:	Photovoltaics On Grid
		Entry Level:	1
		✓ Laundry:	Individual Room, Inside
		✓ Room Type:	Living Room, Walk-in Closet, Kitchen, Laundry, Walk-in Pantry, Main Floor Bedroom, Entry, Main Floor Primary Bedroom, Primary Suite, Primary Bathroom, Primary Bedroom
		✓ Flooring:	Wood, Tile
		✓ Window Features:	Skylight(s)
		✓ Entry Location	
		✓ Spa Construction:	In Ground, Private
		✓ Property Condition:	Updated/remodeled
		✓ Exterior Features:	Lighting
		✓ Interior Features:	High Ceilings, Pantry, Recessed Lighting, Balcony, Quartz Counters
		Main Level Bathrooms:	3
		Main Level Bedrooms:	3
		✓ Heating System:	Central
		✓ Cooling System:	Central Air
		✓ Water Source:	Public
		✓ Sewer:	Public Sewer
		✓ Appliances:	Dishwasher, Refrigerator, Gas Cooktop, Freezer

MLS [Addon](#)

Association Fee Frequency:	Monthly
----------------------------	---------

Parcel Number:	44215135
Lot Size Square Feet:	6,674 Sqft
TaxAnnualAmount:	\$0
Association Fee 2:	\$228
Association Fee:	\$484
Association Fee 2 Frequency:	Monthly
<div>✓</div> RoomKitchenFeatures:	Kitchen Island, Quartz Counters, Walk-in Pantry
<div>✓</div> RoomBathroomFeatures:	Shower, Closet In Bathroom, Separate Tub And Shower, Soaking Tub, Walk-in Shower, Shower In Tub, Dual Shower Heads (or Multiple), Vanity Area, Main Floor Full Bath, Double Sinks In Primary Bath
Garage Spaces:	2
High School:	Arlington
High School 2:	Arling
Middle Or Junior School:	Miller
High School District:	Newport Mesa Unified
Levels:	Two
<div>✓</div> EatingArea:	Dining Room, Breakfast Nook
Taxes:	\$0
Guest House SqFt:	0 Sqft
Approx Lot SqFt:	0 Sqft
<div>✓</div> Special Listing Conditions:	Standard
Virtual Tour URL Unbranded:	Click Here



Rina Maya
☎ 858-876-7946
☎ 800-878-0907
✉ Questions@unitedbrokersinc.net