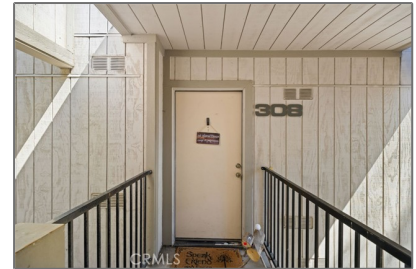
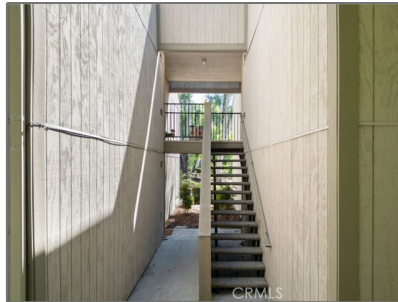


Residential For Sale

1,076 Sqft - 600 Central Avenue, Riverside,
California, 92507



Basic Details

Status: **Active**

Listing Type: **For Sale**

Property Type: **Residential**

Property SubType: **Condominium**

Price: **\$399,900**

Price Per Square Foot: **\$372**

Square Footage: **1,076 Sqft**

Lot Area: **0.02 Sqft**

Year Built: **1980**

View: **Mountain(s)**

Bedrooms: **2**

Bathrooms: **2**

Bathrooms (Full): **2**

Country: **US**

State: **California**

County: **Riverside**

City: **Riverside**

Zipcode: **92507**

Features

✓ View: **Neighborhood**

Association: **1**

Senior Community: **0**

✓ Common Walls: **No Common Walls**

Stories: **1**

✓ Community Features: **Hiking, Biking**

✓ Pool: **Association, Community**

✓ Amenities: **Pool, Barbecue, Outdoor Cooking Area, Picnic Area, Fire Pit**

Attached Garage: **0**

✓ Parking

✓ Parking: **Garage - Single Door, Garage Door Opener**

✓ Patio: **Deck, Patio Open**

✓ Inclusions

Entry Level: **2**

✓ Laundry: **Community**

✓ Room Type: **Family Room, Kitchen,**

Listing ID:	IV25172695	Primary Bathroom, Primary Bedroom
✓	Flooring:	Tile, Laminate
✓	Entry Location:	Front
✓	Property Condition:	Turnkey, Updated/remodeled
✓	Interior Features:	Ceiling Fan(s), Granite Counters
Main Level Bathrooms:		
Main Level Bedrooms:		2
✓	Heating System:	Central
✓	Cooling System:	Central Air
✓	Utilities:	Sewer Connected, Water Connected, Cable Available, Electricity Connected, Natural Gas Connected
✓	Water Source:	Public
✓	Sewer:	Public Sewer
✓	Appliances:	Dishwasher, Gas Water Heater, Microwave, Refrigerator, Free- standing Range

MLS [Addon](#)

Association Fee Frequency:	Monthly
Zoning:	R1
Parcel Number:	253341016
Lot Size Square Feet:	1,030 Sqft
TaxAnnualAmount:	\$0
Association Fee:	\$405
✓ RoomKitchenFeatures:	Remodeled Kitchen,

Stone Counters



RoomBathroomFeatures:

Shower, Bathtub,
Upgraded, Shower In Tub

Garage Spaces: **1**

High School: **North**

High School 2: **North**

Middle Or Junior School: **University**

Elementary School: **Emerson**

High School District: **Riverdale Joint Unified**

Levels: **One**



EatingArea:

Breakfast Counter / Bar,
In Living Room

Taxes: **\$0**

Guest House SqFt: **0 Sqft**

Approx Lot SqFt: **0 Sqft**



Special Listing Conditions:

Standard

Agent [Info](#)



Rina Maya

☎ 858-876-7946

☎ 800-878-0907

✉ Questions@unitedbrokersinc.net