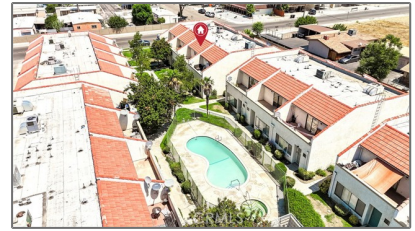


Residential For Sale

1,340 Sqft - 1305 Latham Avenue, Hemet, California, 92543



Basic Details

Status:	Active
Listing Type:	For Sale
Property Type:	Residential
Property SubType:	Townhouse
Price:	\$295,000
Price Per Square Foot:	\$220
Square Footage:	1,340 Sqft
Year Built:	1983
View:	Mountain(s)
Bedrooms:	3
Bathrooms:	3
Bathrooms (Full):	2
Bathrooms (1/2):	1
Country:	US
State:	California

Features

✓ View:	Park/greenbelt
Association:	1
Senior Community:	0
✓ Common Walls:	2+ Common Walls, No One Above, No One Below
Stories:	2
✓ Community Features:	Sidewalks, Street Lights, Golf, Hiking, Park, Curbs, Horse Trails, Dog Park, Foothills, Hunting, Biking, Fishing, Lake
✓ Pool:	Fenced, In ground, Association, Gunite, Community
✓ Amenities:	Pool, Maintenance Grounds, Trash, Insurance, Maintenance Front Yard
AttachedGarage :	1

County:	Riverside	✓	Parking:	2.00
City:	Hemet	✓	Parking:	Direct Garage Access, Garage Door Opener, Garage - Two Door, Assigned, Garage Faces Rear
Zipcode:	92543			
Listing ID:	OC25180470			
			Spa:	1
		✓	Lot Features:	Landscaped, Level With Street, Near Public Transit
		✓	Fence:	Wrought iron
		✓	Patio:	Roof Top, Terrace
			Entry Level:	1
		✓	Laundry:	Inside, Gas & Electric Dryer Hookup
		✓	Room Type:	All Bedrooms Up, Primary Bathroom, Primary Bedroom
		✓	Roofing:	Slate
		✓	Flooring:	Carpet, Tile
		✓	Entry Location:	Ground
		✓	Spa Construction:	Community, In Ground, Association, Gunite
		✓	Property Condition:	Updated/remodeled
		✓	Foundation Details:	Slab
		✓	Interior Features:	Open Floorplan, Balcony, Unfurnished
			Main Level Bathrooms:	1
		✓	Heating System:	Central
		✓	Cooling System:	Central Air
		✓	Utilities:	Electricity Available, Natural Gas Available, Water Available, Cable Available, Phone Available, Sewer Available

✓	Water Source:	Public
✓	Sewer:	Public Sewer
✓	Appliances:	Water Heater

MLS [Addon](#)

Association Fee Frequency: **Monthly**

Parcel Number: **442061020**

TaxAnnualAmount: **\$0**

Association Fee: **\$355**

✓	RoomKitchenFeatures:	Kitchen Island, Kitchen Open To Family Room
✓	RoomBathroomFeatures:	Shower, Bathtub, Walk-in Shower, Exhaust Fan(s), Linen Closet/storage, Remodeled, Shower In Tub

Garage Spaces: **2**

High School: **Arlington**

High School 2: **Arling**

Middle Or Junior School: **Miller**

High School District: **Hemet Unified**

Levels: **Two**

✓	EatingArea:	In Kitchen, Breakfast Counter / Bar
---	-------------	-------------------------------------

Taxes: **\$0**

Guest House SqFt: **0 Sqft**

Approx Lot SqFt: **0 Sqft**

✓	Special Listing Conditions:	Standard
---	-----------------------------	----------

Agent [Info](#)



Rina Maya

☎ 858-876-7946

☎ 800-878-0907

✉ Questions@unitedbrokersinc.net
