

Residential For Sale

1,486 Sqft - 15106 Edgemoor St, San Leandro,
California, 94579



Basic Details

Status:	Active
Listing Type:	For Sale
Property Type:	Residential
Property SubType:	Single Family Residence
Price:	\$849,000
Price Per Square Foot:	\$571
Square Footage:	1,486 Sqft
Lot Area:	0.12 Sqft
Year Built:	1950
View:	Mountain(s)
Bedrooms:	3
Bathrooms:	2
Bathrooms (Full):	2
Country:	US
State:	California
County:	Alameda
City:	San Leandro
Zipcode:	94579

Features

Association:	0
AttachedGarage :	1
✓ Parking:	11.00
✓ Parking:	Garage, Rv Access/parking
✓ Fireplace:	Living room, Family room
✓ Lot Features:	Back Yard, Front Yard, Level With Street, Yard, Sprinklers On Side, Corner Lot, Sprinklers In Rear, Sprinklers In Front
✓ Patio:	Front Porch
✓ Laundry:	Dryer Included, Washer Included
✓ Room Type:	Family Room
✓ Roofing:	Shingle
✓ Flooring:	See Remarks
✓ Heating System:	gravity
✓ Sewer:	Public Sewer
✓ Appliances:	Gas Water Heater

Listing ID:

41108078

MLS [Addon](#)

Parcel Number:

80H150023

Lot Size Square Feet:

5,400 Sqft

TaxAnnualAmount:

\$0

✓

RoomKitchenFeatures:

Stone Counters

Garage Spaces:

2

High School:

Arlington

High School 2:

Arling

Middle Or Junior School:

Miller

Levels:

One

Lease Term :

12 Months

Taxes:

\$0

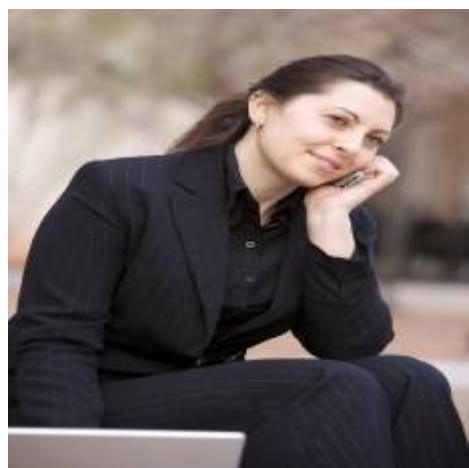
Guest House SqFt:

0 Sqft

Approx Lot SqFt:

0 Sqft

Agent [Info](#)



Rina Maya

📞

858-876-7946

📞

800-878-0907

✉️

Questions@unitedbrokersinc.net